

COMPENSATION PLAN



WELCOME

TO THE NEOLIFE CLUB!

You now belong to a Club of like-minded people eager to demonstrate how good health, fitness and financial freedom can become an everyday lifestyle! Our mission is to help you and everyone who joins the NeoLife Club to **“Be Your Best.”**

The NeoLife Club community is growing and vibrant. The NeoLife Club is born out of a rich 50+ year heritage and today has evolved to embrace the fast paced and ever engaging social networking generation.

We are proud to provide you with products that work to deliver important results and all based upon the best of Science and Nature.

We are in position to deliver solutions to today’s obesity epidemic with a system including products, a “let’s do this together” spirit and coaching guidance to embrace a healthier lifestyle.

And, if you’re already in good shape we have the products and culture that fitness minded people want to share.

Most importantly, we are proud of our loyal Promoters, dedicated to making a difference by reaching out and helping their family, friends and co-workers to realize their full potential.

We are a “word of mouth,” social networking business. Rather than paying advertisers we pay you for sharing our products and our message. That is what this “Compensation Plan” guide is all about.

As a NeoLife Promoter you have 3 valuable Profit Centers:

- 1. Product Sharing Profit Center**
- 2. Opportunity Sharing Profit Center**
- 3. Leadership Building Profit Center**

With the first of these profit centers we can help you to earn a fun part time income while simply embracing a healthy lifestyle. In the Leadership Building Profit Center we will show you how, still working part time in the NeoLife Club, you can achieve dreams you may have long forgotten!

Let’s get started so that you can see how simple it is to get paid by sharing the NeoLife Club!



PRODUCT SHARING PROFIT CENTER

SHARING NEOLIFE PRODUCT IS SIMPLE TO DO.

The first benefit you will receive comes by enrolling Club Members.

- Enroll just 3 Club Members with a Health Pack on Auto-Ship and you can receive your Health Pack FREE!

CLUB MEMBERS ARE YOUR REGULAR CUSTOMERS. YOU GUIDE THEM TO:

- Submit a Club Member application usually through your website
- Select a “Health Pack” to receive directly from the Company on monthly Auto-Ship

MAKE SURE YOUR CLUB MEMBERS KNOW...

...they can earn their Health Pack **FREE** by referring 3 Club Members onto monthly Auto-Ship!

Use your website to share complete details about the “**Refer 3; Get Yours FREE!**” incentive.



SALES VOLUME BONUS

You earn Sales Volume Bonus (SVB) based upon accumulated volume, combining your volume and the volume of all your Club Members and Promoters.

And, the percentage that you earn increases as your accumulated volume called “Qualified Point Value” (QPV) increases as shown in the Sales Volume Bonus Chart below:

SALES VOLUME BONUS (SVB) CHART

DIRECTORS	Total Monthly QPV	Sales Volume Bonus
	4,000	20%
	2,000	15%
	1,000	10%
	500	5%
	250	3%



VALUABLE SUPPORT:

Every Promoter and Club Member receives a **FREE** personal website to help them share the NeoLife Club. Your sponsor and upline Director are experienced and valuable guides. They can help you to introduce the NeoLife Club to your family, friends and co-workers.

IMPORTANT TERMINOLOGY:

PV – Point Value – PV is a Point Value assigned to each product and is used to qualify for bonuses, recognition and achievements.

PPV – Personal Point Value – Personal PV is the PV on your Promoter Account from the purchases you have made during the month plus the PV on the accounts of the Members you have sponsored. To participate as an Active Promoter in NeoLife’s Compensation Plan and Promoter Incentives you need 100 Personal PV with at least 30 PV coming from your own account.

QPV – Qualified Point Value – QPV is a combined PV figure that includes your Personal PV for the month plus the PV of all the Promoters and Club Members you’ve sponsored, and that they have sponsored, extending to the next Qualified Director in your downline. Your QPV determines your qualification for Compensation Plan recognition levels and the percentage of Sales Volume Bonus that you earn each month.

OPPORTUNITY SHARING PROFIT CENTER

SHARING THE NEOLIFE CLUB BUSINESS OPPORTUNITY IS YOUR SECOND PROFIT CENTER.

You can sponsor Promoters into your Network in the same way that you became a Promoter. You and your upline Director will work with your new Promoter to help them get started.

When they enroll, your Promoters will:

- Submit a Promoter Application usually through your website
- Select a Business Kit
- Select a Health Pack for monthly Auto-Ship



Your Promoters can earn their Health Pack **FREE** by referring
3 Club Members onto monthly Auto-Ship!

Refer everyone to your website for complete details about the
“Refer 3; Get Yours **FREE!**” incentive.

SELECT A BUSINESS KIT

Business Kits are important because they each have different features. Your Sponsor will be able to guide you to the order that will best match your goals:

FEATURES OF BUSINESS KITS

	With these Business Kits you have valuable extra benefits			
	Basic Promoter Kit	Builder Kit	Manager Kit	Senior Manager Kit
New Promoter Special Price*	\$65.00	\$627.00	\$1,106.00	\$2,165.00
Regular Promoter Price (DC)**	\$65.00	\$647.00	\$1,141.00	\$2,232.00
Compensation Plan Bonuses available when you sponsor Promoters:				
First Order Bonus	No	"Earn Like a Director" incentive applies through January 2018		
Sales Volume Bonus	Yes	Yes	Yes	Yes
Can achieve Director This Month	No	No	Yes	Yes
Senior Manager Level "Locked In" for 3 months	No	No	No	Yes
Minimum SVB % for 1st 3 Months	-	-	-	10%

*Special discounted price available only when the Business Kit is purchased at time of enrollment.

**Regular price is the price offered on Business Kits ordered after enrollment.

GET ON THE CHART!

AS A PROMOTER, YOU START EARNING BONUSES IN THE NEOLIFE COMPENSATION PLAN!

Promoters receive volume-based earnings!

The more products you and your Promoters sell, the more income you can make through Sales Volume Bonuses. Your Sales Volume Bonus is calculated each month using the percentages shown in the chart. A minimum of 100 PPV is required to earn a Sales Volume Bonus.

SALES VOLUME BONUS (SVB) CHART



TIP: The best way to ensure that you reach your 100 PPV requirement is to place a monthly Auto-Ship order.

	Total Monthly QPV	Sales Volume Bonus
DIRECTORS	4,000	20%
	2,000	15%
	1,000	10%
	500	5%
	250	3%

Manager Qualifications

Accumulate volume from your orders plus the orders of Promoters you sponsored for a total of 500 QPV (Qualified Point Value) in one month, with at least 100 Personal PV.



Manager Benefits

All the Promoter benefits plus...

- Receive a “Manager” pin recognizing your achievement.
- Attend NeoLife sales meetings, team training, and special events.

YOUR BUSINESS WILL GROW AS YOU GROW

MOVING UP TO SENIOR MANAGER

Senior Manager Qualifications

Accumulate 1,000 QPV in one month with 100 PPV.

SPECIAL NOTE: You can achieve both your Manager and Senior Manager qualifications in the same month.

Senior Manager Benefits

All the Manager benefits plus...

- Receive a “Senior Manager” pin recognizing your achievement.
- Attend Senior Manager training and other leadership events.
- Active Senior Managers will advance to Director and a 20% Sales Volume Bonus when they accumulate 4,000 QPV in a month!

Maintain Qualified

Senior Manager

Qualified Senior Manager is a very valuable NeoLife status for you to maintain each month.

- Earn 10% or more Sales Volume Bonus

You are a Qualified Senior Manager the month that you first achieve 1,000 QPV. Every month thereafter that you achieve 1,000 QPV or more, you maintain your Qualified Senior Manager status.

SPECIAL 2017 INCENTIVE!

Qualified Senior Managers earn extra First Order Bonuses (see Incentive Flyer for details).

SALES VOLUME BONUS (SVB) CHART

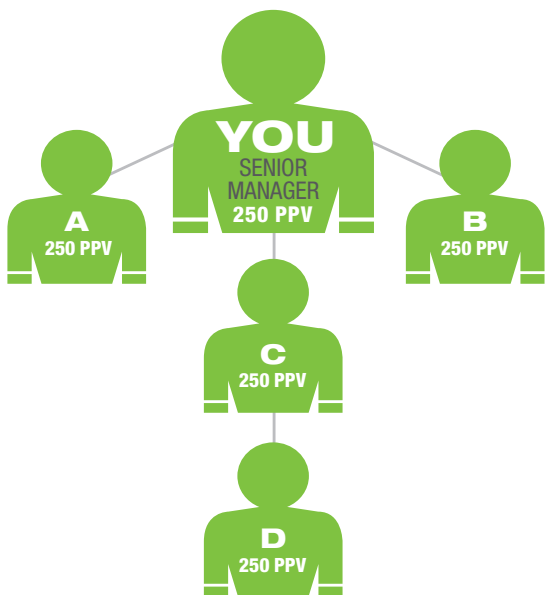
	Total Monthly QPV	Sales Volume Bonus
DIRECTORS	4,000	20%
	2,000	15%
	1,000	10%
	500	5%
	250	3%



IT'S BONUS TIME!

NeoLife's Sales Volume Bonus (SVB) rewards you not just for your orders, but also for the orders placed by all the Promoters in your team!

In the example below, you ordered 250 PV of product and so did each of the 4 Promoters that you've sponsored into your team:



MONTHLY QPV DETERMINES YOUR BONUS %

Qualified PV (QPV)	
Example Promoter	PPV
+You	250
+A	250
+B	250
+C	250
+D	250
Total:	1250 QPV
SVB BONUS % FOR YOU IS 10%	

Your Team Earns SVB according to their own QPV	You Earn on the Volume of their Orders	
A has 250 QPV and earns 3% SVB	7% (Your 10% rate less 3% earned by A)	7% X 250 = \$17.50
C has 500 QPV and earns 5% SVB	5% (Your 10% rate less 5% earned by C)	5% X 500 = \$25.00
B has 250 QPV and earns 3% SVB	7% (Your 10% rate less 3% earned by B)	7% X 250 = \$17.50
	Plus 10% on your own Orders	10% X 250 = \$25.00
	YOUR TOTAL SALES VOLUME BONUS	\$85.00

*For simplicity the income illustrations on this page assume that BV is equal to PV. Actual Sales Volume Bonuses would be significantly larger when paid on true BV.

THE POWER OF NETWORKING!

Notice that by introducing others to NeoLife, **you** as a Qualified Senior Manager increase your QPV to 1,250 and your bonus to \$85.00.

Without the network of Promoters, **you** would have had only 250 PV and a bonus of 3% (\$7.50).

By sponsoring others into NeoLife, You as a Senior Manager earn an extra \$77.50!

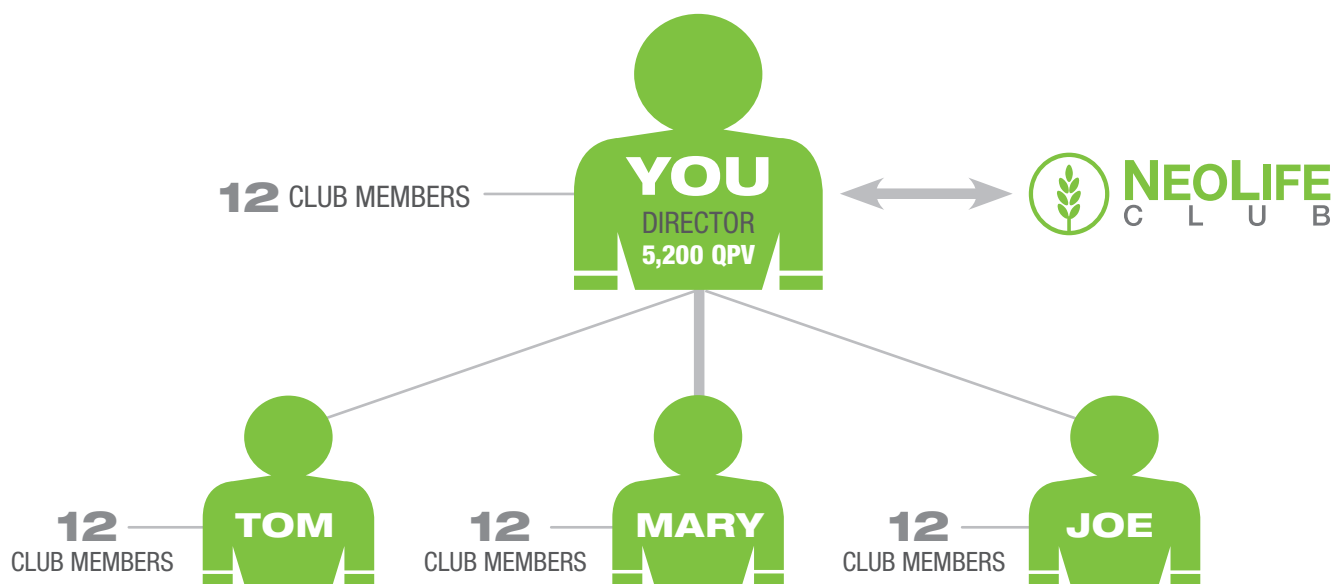
REACH FOR HIGHER BONUS LEVELS ON THE CHART!

In this example, your Bonus was based upon your 1,250 QPV and you qualified for 10%.

Note that by reaching 2,000 QPV your Bonus rate would have been 15% and you would earn an additional 5% on all the orders in your network of Promoters!

ACHIEVING DIRECTOR IS

YOUR KEY TO SUCCESS



THIS NEOLIFE BUSINESS WOULD EARN MORE THAN \$12,000 PER YEAR!

BUILD YOUR BASIC 3

- You have 12 Club Members.
- You have started 3 other people as Promoters and they also have 12 Club Members each.

In our illustration, we assume each club member is using 100 PV worth of product. New customers may start with less than this, but regular customers often use much more.

A Director-size business built in this way would earn approximately \$12,000 per year including incentives! This is excellent income for part-time work.

The illustration above is designed to simplify the explanation of how a NeoLife Club business is built.

The Director Model accumulating 5,200 QPV is illustrated throughout these income examples. The minimum qualification for Qualified Director is 4,000 QPV; however the average QPV among Qualifying Directors is significantly higher. In NeoLife examples this Director Model is commonly used.

Example illustration only. These sales network illustrations and earnings calculations are not a guarantee or projection of actual income that a NeoLife Promoter will earn through his or her participation in the Compensation Plan. Any guarantee of earnings would be misleading. Success with the NeoLife Compensation Plan results from successful sales efforts and business development on the part of the Promoter. Income applicable to the individuals (or examples) depicted are not average. For average financial performance data, see the Statement of Average Gross Compensation paid by NeoLife at NeoLife.com.

STATEMENT OF AVERAGE GROSS COMPENSATION

USA & CANADA

At NeoLife, we are on a mission to make the world a healthier and happier place. People choose to join NeoLife for a variety of reasons, but most are simply customers looking to enjoy NeoLife products at a discount.

NeoLife's Club Member program is designed with these individuals in mind. It is free to join and gives customers the ability to shop at a special 15-25% discount. Club Members also have access to a fun and passionate community, with a goal of empowering them with resources for education and personal development. Club Members can earn free product with the 3 for Free program, but they do not earn money from commissions.

For those who wish to earn an income with NeoLife, we suggest becoming an Independent Promoter. With the NeoLife Promoter opportunity, we help people have success with startups. It's kind of like a tech startup but with nutrition. There are low barriers to entry because NeoLife provides the infrastructure that any successful business needs, as well as a consumable product and generous compensation plan. So instead of having to raise hundreds of thousands of dollars to get started with a traditional startup, it's makes entrepreneurship accessible to everyone. It's your business on your terms, that can also be passed down as an asset to future generations. Unlike traditional business startups, building a NeoLife business does not require a significant investment in inventory, sales tools, or other materials. NeoLife promoters are strongly discouraged from purchasing more than they can reasonably consume or sell in a given month, and they are protected by NeoLife's 100% money-back consumer guarantee as well as repurchase policy for those who decide to leave the business.

Other companies gain legitimacy and brand awareness with ads on TV and splash marketing campaigns. We do it through people. Because we believe in people. So we don't spend on advertising, we pay our Promoters instead... purely and simply based on performance. As is the case in any business, results vary depending on various factors.

There are various ways to earn as a NeoLife Promoter. This includes retail profits by buying at wholesale and selling at Suggested Retail Price. The NeoLife Compensation plan pays Promoters based on personal orders and the orders of Club Members and Promoters in their team. Payout is calculated based on volume of product sold. A sliding scale Sales Volume Bonus (SVB) determines the percentage earned. A Promoter must simply have 100 Personal PV and they are eligible to earn a Sales Volume Bonus of up to 20%. When a Promoter achieves Director title they also earn Leadership Development Bonuses on other Directors developed in their downline organization. Promoters who reach the elite status of President's Team, qualify for a Network Development Bonus on their entire network. Promoters can also qualify for regular incentives, personal recognition and travel rewards based on performance. Promoters are not paid for recruiting new Club Members or Promoters. They are paid primarily based on product sales to end users.

The following figures are designed to help prospective Promoters better understand the different ranges of average compensation that NeoLife pays to its Promoters. The figures below indicate profits for retail sales, but only to the extent that those sales were made directly through NeoLife channels. The compensation represented in this document should not be viewed as guarantees or projections of any individual results.

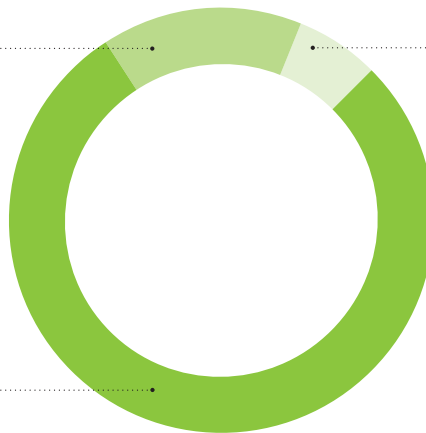
Together we will End the Trend of Sickness and Chronic Disease.

15.1% Product Sharers

Consumers who earned some consideration including Free Product from the NeoLife 3 for Free program. NeoLife has observed that these individuals are primarily with NeoLife to enjoy our products and share to offset the cost of their products. Their earnings were less than \$500 during 2016 and their average earnings were \$143.

78.6% Product Users

Simply consumers, enjoying all the benefits of NeoLife products at a discounted price.



6.3% Business Builders

Includes active participants who are earning Bonuses exceeding \$500 for the year. These are individuals who devote skill, time and effort to pursuing the NeoLife income opportunity. The incomes and percentages displayed, relate only to the 6.3% of business builders.

Business Builder Earnings	% of Business Builders	Average Annual Income
\$100,000+	1.0%	\$152,829
\$50,000 - \$99,999	2.6%	\$64,877
\$25,000 - \$49,999	4.6%	\$33,838
\$10,000 - \$24,999	10.0%	\$15,497
\$5,000 - \$9,999	9.6%	\$7,203
\$1,000 - \$4,999	43.2%	\$2,301
\$500 - \$999	28.9%	\$713

The total population that we compiled our data from is the total of all USA & Canadian Accounts through which orders were placed. Earnings expressed in USD and applies to combined USA & Canadian markets.

ACHIEVING DIRECTOR IS

YOUR KEY TO SUCCESS

DIRECTOR QUALIFICATIONS

The NeoLife Club Director Qualifications include two simple steps:

1. Achieve Senior Manager and maintain Active Promoter status*
2. In any subsequent month, accumulate 4,000 QPV

* To be an Active Promoter, maintain at least 100 Personal PV each month. After achieving Senior Manager you must have Active Promoter status the month prior to achieving Director.



TIP:

DIRECTOR QUALIFICATIONS are normally achieved in a minimum of 2 months: the Senior Manager qualifying month and a subsequent 4,000 QPV month.

Promoters who begin with Manager or Senior Manager Kits can achieve Director immediately; even in the month that they start by simply achieving 4,000 QPV.

DIRECTOR BENEFITS

Director benefits include:

1. A prestigious Director Pin
2. Earn the “Top of the Chart” 20% SVB
3. Earn Leadership Development Bonuses
4. Participate in special Director incentives

SPECIAL 2017 INCENTIVE!

1. Qualified Directors earn 5% First Order Bonus on Team (see Incentive Flyer for details)
2. New Directors since 2015 can earn invitation to Leadership School (see Incentive Flyer for details)

YOUR NEXT STEP

ACHIEVE EMERALD DIRECTOR

Emerald Director is an exciting goal for every NeoLife Director. Emerald Director status reflects consistency in maintaining a growing Director business.

EMERALD DIRECTOR BENEFITS

Director benefits plus:

1. Receive a prestigious Emerald Director Pin
2. Eligible for special incentives such as the NeoLife Club Car Bonus*
3. You're on the path toward World Team qualifications and benefits

QUALIFICATIONS

NeoLife's Emerald Director qualifications include two simple steps:

1. Be a NeoLife Director.
2. Achieve 3 consecutive months as a Qualified Director with at least 4,000 QPV.

MAINTAINING EMERALD DIRECTOR

To maintain Emerald Director, simply achieve Qualified Director status with 4,000 QPV a minimum of 1 in every 3 months after your 3 consecutive months as a Qualified Director.

TIP FOR NEW DIRECTORS: The month that you achieve Director counts as the first month toward Emerald Director. This means you have only two additional Qualified Director months to achieve to be recognized as an Emerald Director!

Achieve 5,000 QPV in the third month and you earn a Car Bonus!

*NeoLife incentives such as Car Bonus are reviewed regularly and are subject to change. Please refer to Incentive flyers available in your Promoter Only back office for current qualifications and details.

NEOLIFE CLUB CAR BONUS

**EARN AN EXTRA
BONUS OF
\$175 TO \$1,150
PER MONTH!**



See Car Bonus Incentive Flyer for details.

LEADERSHIP BUILDING PROFIT CENTER

NEOLIFE WORLD TEAM - LIVE LIFE AS YOU CHOOSE

DEVELOPING QUALIFIED DIRECTORS IS YOUR SPRINGBOARD TO SUCCESS!

UNLIMITED SUCCESS WITH NEOLIFE

Qualify as a NeoLife World Team Member by developing a Qualified Director in your group, and then together accumulating at least 10,000 Group PV per month for any three months in a six-month period.

As your team grows, you reach even higher levels on the World Team. There are 11 recognition levels and qualifications for each level are based on the combination of Qualified Director “legs” in your group and your total Group PV.

**Your recognition level—
and your financial
rewards—increase each
step of the way!**

TIP: Group PV is your QPV plus the QPV of three levels of Qualified Directors in your group.

WORLD TEAM

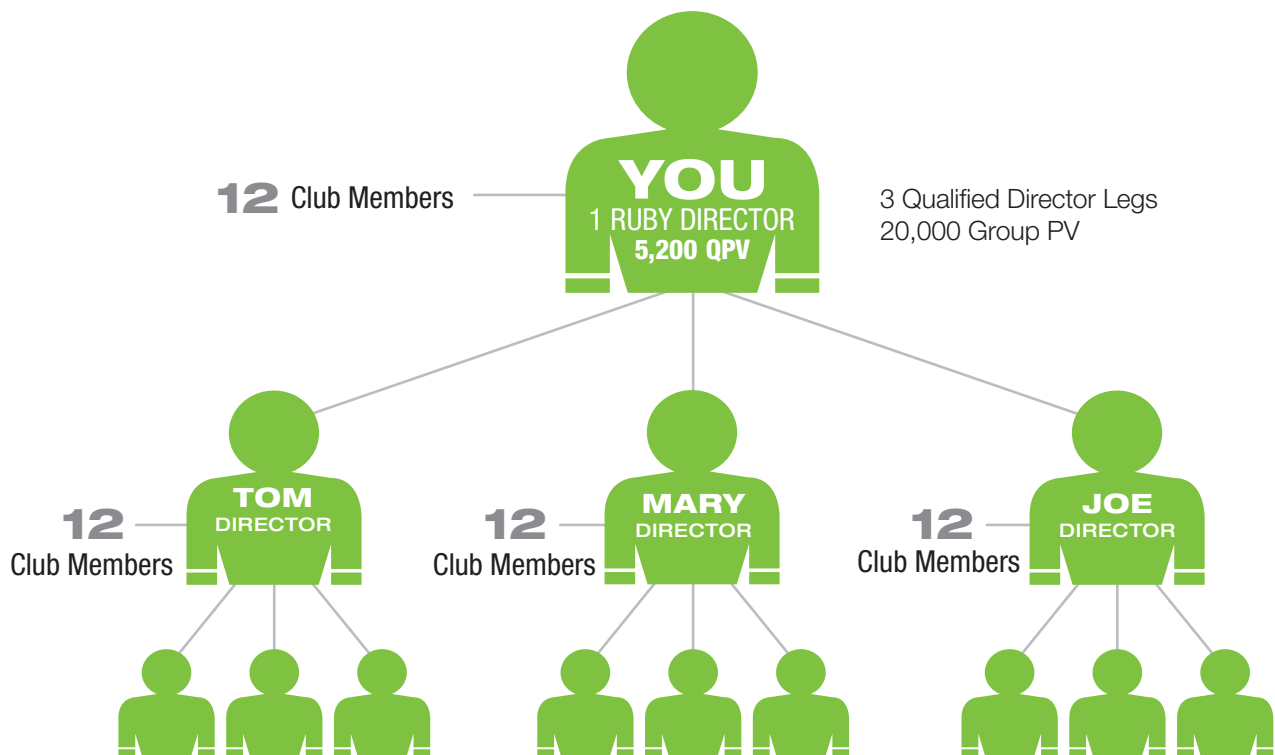
		QUALIFICATIONS	
		First Level Director Legs	Total Group PV
PRESIDENT'S TEAM	5 Diamond Director	18	500,000
	4 Diamond Director	16	400,000
	3 Diamond Director	14	300,000
	2 Diamond Director	12	250,000
	1 Diamond Director	10	200,000
	5 Ruby Director	8	150,000
	4 Ruby Director	6	100,000
	3 Ruby Director	5	50,000
	2 Ruby Director	4	30,000
	1 Ruby Director	3	20,000
	Sapphire Director	1	10,000

THE POWER OF DUPLICATION!

YOUR BUSINESS: BUILDING THROUGH DUPLICATION

Each of the Directors in the illustration below has developed their own network of club members and Promoters, and so each is maintaining a business averaging approximately 5,200 Points per month.

A NEOLIFE BUSINESS STRUCTURED LIKE THIS WOULD EARN APPROXIMATELY \$37,000 PER YEAR!



This illustration also shows you continuing to service your 12 customers, but it's important to note that Directors at this level have quite often built a much larger personal customer base—and are therefore earning much more residual income than that indicated by this basic illustration.

This is a simplified illustration of a 1 Ruby Director-size NeoLife business.

Example illustration only. These sales network illustrations and earnings calculations are not a guarantee or projection of actual income that a NeoLife Promoter will earn through his or her participation in the Compensation Plan. Any guarantee of earnings would be misleading. Success with the NeoLife Compensation Plan results from successful sales efforts and business development on the part of the Promoter. Income applicable to the individuals (or examples) depicted are not average. For average financial performance data, see the Statement of Average Gross Compensation paid by NeoLife at NeoLife.com.

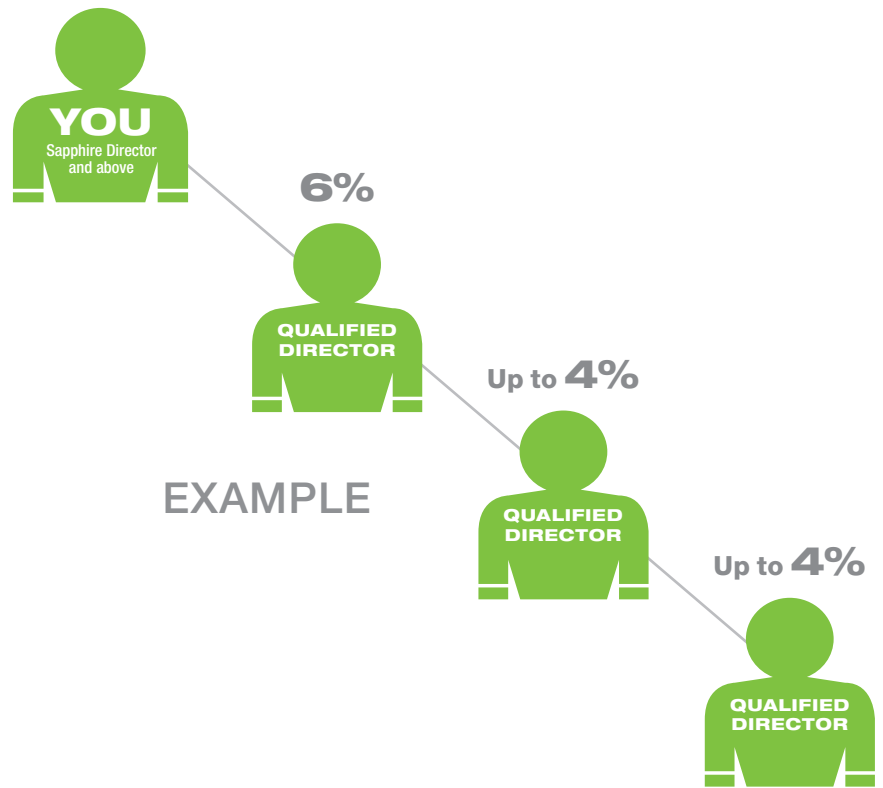
LEADERSHIP DEVELOPMENT BONUS

HERE'S HOW IT WORKS:

When you help others to grow their own Director-size NeoLife business, they begin earning top-of-the-chart Sales Volume Bonus—and your earnings on their volume shifts to Leadership Development Bonus.

This is how NeoLife rewards your leadership role in developing your network of Director-size businesses.

You earn Leadership Development Bonus on 3 levels of Qualified Directors: As you advance up the World Team to 3 Ruby Director, your Bonus percentages grow to 6% on your First-Level Directors, 4% on your Second-Level Directors, and 4% on your Third-Level Directors.



LEADERSHIP DEVELOPMENT BONUS CHART

	1st Level	2nd Level	3rd Level	
DIRECTORS	4 Ruby and above	6%	4%	4%
	3 Ruby Director	6%	4%	4%
	2 Ruby Director	6%	4%	3%
	1 Ruby Director	6%	3%	2%
	Sapphire Director	6%	2%	1%
	Director	5%	2%	1%

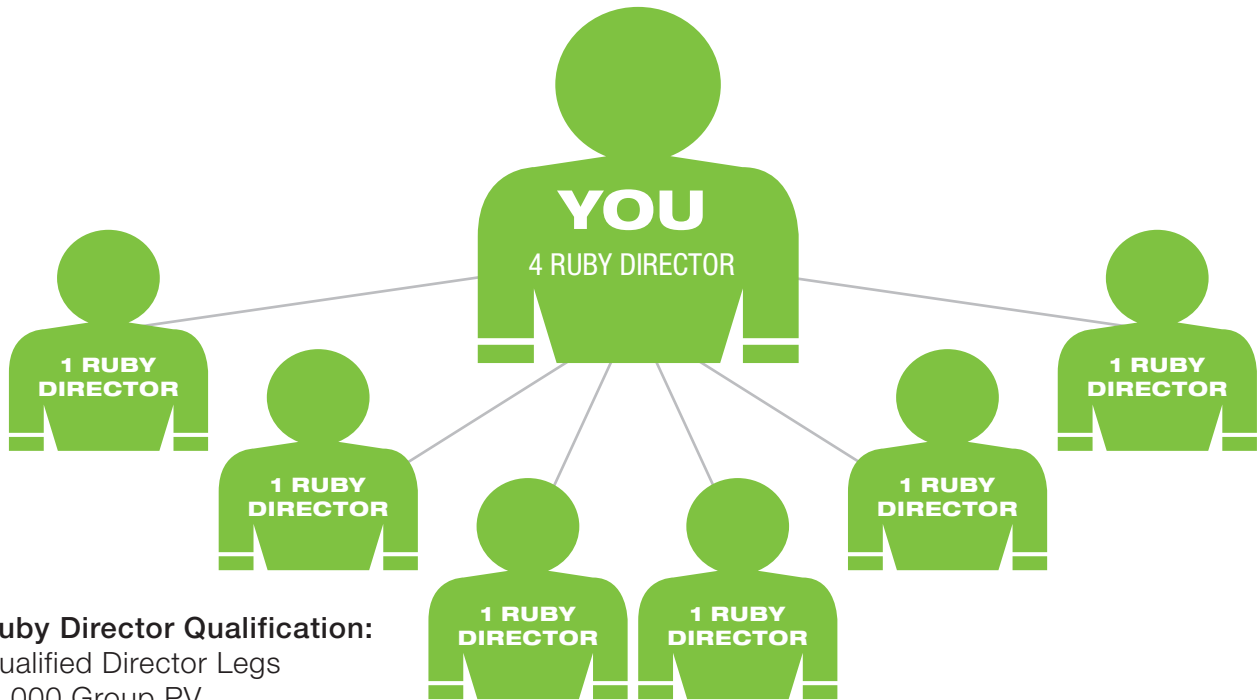
For qualification requirements see page 8.

THE ULTIMATE REWARD

JOINING THE PRESIDENT'S TEAM

Using the Power of Duplication, in this illustration you have now helped a total of 6 Directors and they have each helped 3 others to achieve a Director-size business.

**A NEOLIFE BUSINESS STRUCTURED LIKE THIS WOULD EARN
APPROXIMATELY \$120,000 PER YEAR!**



Example illustration only. These sales network illustrations and earnings calculations are not a guarantee or projection of actual income that a NeoLife Promoter will earn through his or her participation in the Compensation Plan. Any guarantee of earnings would be misleading. Success with the NeoLife Compensation Plan results from successful sales efforts and business development on the part of the Promoter. Income applicable to the individuals (or examples) depicted are not average. For average financial performance data, see the Statement of Average Gross Compensation paid by NeoLife at NeoLife.com.

NETWORK DEVELOPMENT BONUS

WHAT IS A NETWORK DEVELOPMENT BONUS?

As you continue to take advantage of the Power of Duplication, adding new Directors and helping your group develop Directors in their networks, you will achieve 4 Ruby Director title which makes you a member of the elite President's Team - and you begin earning your Network Development Bonus. 4 Ruby Directors and above earn their Network Development Bonus on their entire network's organizations, through unlimited levels, down to and including the next Director of the same pay status. As a Diamond Director you earn 0.5% bonus on all the Directors in the network of the first Diamond Director below you. This is regardless of the status of that Diamond Director, and continues down through all levels until another Diamond Director is reached.

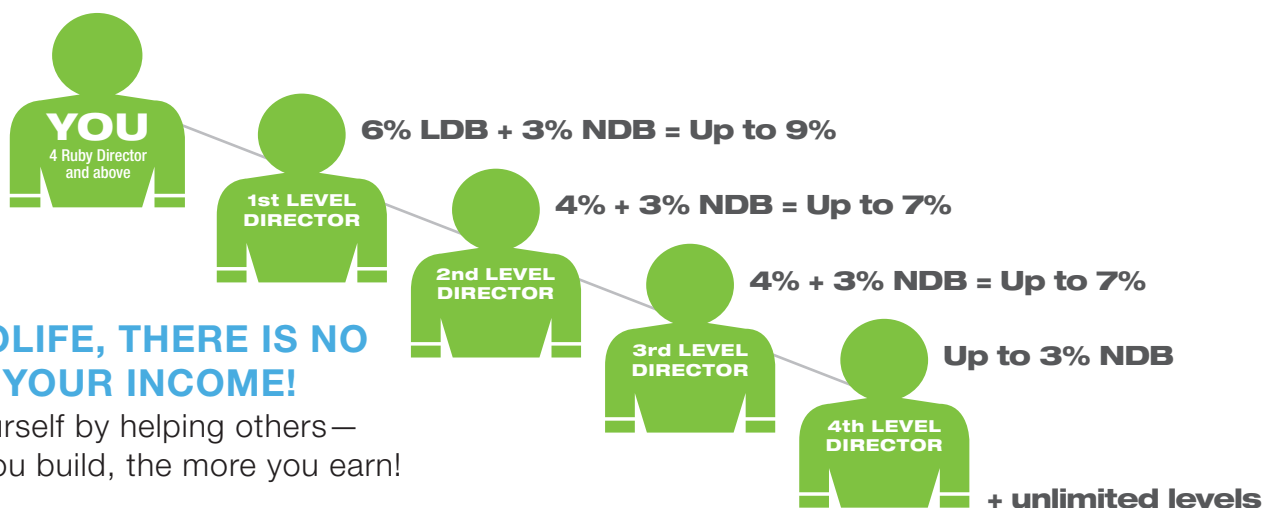
These Network Development Bonuses are paid in addition to the Leadership Development Bonuses you earn!

PRESIDENT'S TEAM - NETWORK DEVELOPMENT BONUS

Payment on First Level Diamond Director

	Legs/ Group	Own Team	4 Ruby	5 Ruby	1 Diamond	2-5 Diamond
5 Diamond Director	18/500,000	3%	2.5%	2%	1%	0.5%
4 Diamond Director	16/400,000	3%	2.5%	2%	1%	0.5%
3 Diamond Director	14/300,000	3%	2.5%	2%	1%	0.5%
2 Diamond Director	12/250,000	3%	2.5%	2%	1%	0.5%
1 Diamond Director	10/200,000	2%	1.5%	1%	0.5%	0.5%
5 Ruby Director	8/150,000	1%	0.5%	0.5%		
4 Ruby Director	6/100,000	0.5%	0.5%			

*Ruby Director Payment on First Level Ruby Director of the same status



WITH NEOLIFE, THERE IS NO LIMIT ON YOUR INCOME!

You help yourself by helping others—the bigger you build, the more you earn!



For more information:
NeolifeClub.com
800.432.5842