

Sheehan & Associates, P.C.  
Spencer Sheehan  
60 Cuttermill Rd Ste 409  
Great Neck, NY 11021-3104  
Telephone: (516) 268-7080  
spencer@spencersheehan.com

United States District Court  
Eastern District of New York

1:20-cv-05683

Corey Prescott, individually and on behalf  
of all others similarly situated,

Plaintiff,

- against -

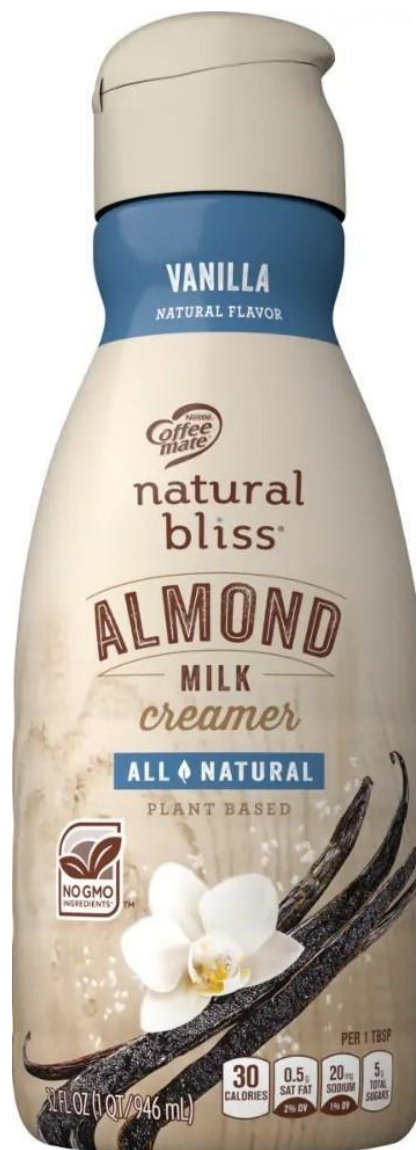
Nestlé Holdings, Inc.,

Defendant

Complaint

Plaintiff by attorneys alleges upon information and belief, except for allegations pertaining to plaintiff, which are based on personal knowledge:

1. Nestlé Holdings, Inc. (“defendant”) manufactures, distributes, markets, labels and sells almond milk coffee creamer labeled as “Vanilla” under the Natural Bliss brand (“Product”).
2. The Product is sold in bottles of 32 OZ to consumers from retail and online stores.
3. The label states “Vanilla,” “Natural Flavor,” “All Natural” and has images of vanilla beans and a vanilla flower.



4. Contrary to the front label representations of “Vanilla” and “Natural Flavor,” the Product is not flavored mainly from vanilla and has no appreciable amount of vanilla.

5. Instead, the Product is flavored mainly from vanillin from non-vanilla sources and as a result, does not taste like vanilla.

6. Vanilla (*Vanilla planifolia* Andrews and *Vanilla tahitensis* Moore) comes from an orchid plant that originated in Mexico where it was first cultivated.

7. The fruit pod of the vanilla flower is the vanilla bean, the raw material for vanilla flavorings.

8. The vanilla bean is heated in the sun and its flavor constituents extracted in alcohol.
9. Vanilla's unique and complex flavor is due to its many odor-active compounds including acids, ethers, alcohols, acetals, heterocyclics, phenolics, hydrocarbons, esters and carbonyls, shown in a sample of vanilla extract.

MS Scan #	Area Integration	Peak Assignment	Peak Area %
67	16132	hexanal	0.0206
71	16235	butanediol isomer	0.0207
81	57370	butanediol isomer	0.0732
103	36387	3-methylbutyric acid	0.0464
115	33053	furfural	0.0422
141	27408	butanal, diethyl acetal	0.0350
262	18390	3-methylbutanal, diethyl acetal	0.0235
281	25224	hexanoic acid	0.0322
289	2729	methyl furfural	0.0035
299	52183	phenol + trace of benzaldehyde	0.0665
349	2385	1H-pyrrole-2-carboxaldehyde	0.0030
379	47287	limonene + benzyl alcohol	0.0603
397	13835	heptanoic acid	0.0176
409	31102	gamma-hexalactone	0.0397
415	19338	p-cresol	0.0247
425	4470	hexanal, diethyl acetal	0.0057
443	287479	guaiacol	0.3666
453	5947	nonanal	0.0076
477	10000	phenylethyl alcohol	0.0128
496	112067	?	0.1429
505	44668	benzoic acid + octanoic acid	0.0570
522	4551	diethyl succinate	0.0058
536	2461	ethyl benzoate	0.0031
544	11769	1,2-benzenediol	0.0150
555	145356	2-methoxy-4-methylphenol	0.1854
567	2537	methyl salicylate	0.0032
587	8552	hydroxy methyl furfural (HMF)	0.0109
594	5555	benzeneacetic acid	0.0071
605	101562	nonanoic acid	0.1295
624	6802	hydroquinone	0.0087
631	3864	4-methoxybenzaldehyde (p-anisaldehyde)	0.0049
642	6356	ethyl nonanoate	0.0081
653	53264	4-methoxybenzyl alcohol (p-anisyl alcohol)	0.0679
676	14481	cinnamyl alcohol	0.0185
685	16094	3-hydroxybenzyl alcohol	0.0205
718	12188570	3-hydroxybenzaldehyde + 4-ethoxymethylphenol	15.5440
751	122634	methyl cinnamate	0.1564
759	60715743	vanillin	77.4301
796	90669	methyl-p-methoxybenzoate (methyl paraben)	0.1156
809	2228588	vanillyl ethyl ether + trace of 4-hydroxy-3-methoxybenzyl alcohol	2.8421
832	224829	p-hydroxybenzoic acid	0.2867
839	37335	acetovanillone	0.0476
892	950342	vanillic acid	1.2120
908	405589	3,4-dihydroxybenzaldehyde	0.5172
935	82429	3,4-dihydroxy-5-methoxybenzaldehyde	0.1051
954	6212	ethyl homovanillate	0.0079
975	78148	syringaldehyde	0.0997
1266	14130	ethyl palmitate	0.0180
1518	21477	ethyl linoleate	0.0274
<b>78413588 Total</b>			<b>100.0000</b>

10. While vanillin (77.4301 Peak Area %) plays a significant role, it contributes between one-quarter and one-third of the overall flavor/aroma impact of vanilla.
11. The popularity of vanilla in the 19th century led to the isolation of the most predominant flavor component, vanillin.

12. However, vanillin separated from the rest of the vanilla bean does not constitute vanilla flavor.

13. Sensory evaluation of vanillin is mainly sweet, with a lackluster “chemical-like” taste and odor because it lacks the other molecules in vanilla.

14. Vanillin must be accompanied by other compounds to produce the familiar flavor and aroma consumers know as vanilla.

15. The availability of low-cost vanillin resulted in foods purporting to contain vanilla, which either contained no vanilla or a trace or de minimis amount, boosted by synthetic vanillin.

16. Consumer and industry groups have long sought to prevent this deception, where consumers are sold a food labeled as “vanilla” only to discover too late it lacks the richness and layered taste only provided by vanilla beans.

17. The earliest effort to prevent fraud in vanilla products was the U.S. Pharmacopeia standard, which required a specific weight of vanilla beans as the source for vanilla extract.

18. The focus was on the weight of actual vanilla beans, because this would prevent the addition of vanillin to a small amount of vanilla beans.

19. Consumer deception continued through the first half of the 20<sup>th</sup> century, with companies labeling their foods as “vanilla” which were little more than vanillin with caramel coloring.

20. Congress authorized regulations to prevent such deceptive labeling of foods flavored with vanilla, and for over fifty (50) years, most companies adhered to these industry standards.

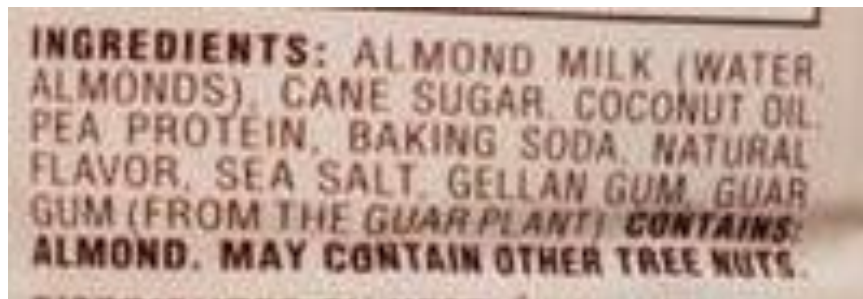
21. This meant consumers were told where a product purported to be flavored as “vanilla” but contained a trace or de minimis amount of vanilla, boosted by vanillin, because it was labeled as imitation vanilla or artificially flavored.

22. In 2018, in response to a surge in fraudulently labeled vanilla flavored foods, The Flavor and Extract Manufacturers Association of the United States (“FEMA”) urged companies to return to truthfully labeling vanilla foods so consumers would not be misled by artificial vanilla flavors.<sup>1</sup>

23. One of the misleading practices highlighted by the flavor industry and the FDA was labeling a food with the terms “Vanilla” and “Natural Flavor” when the amount of vanilla was de minimis and/or the food’s vanilla taste was provided by non-vanilla vanillin.

24. This is misleading because consumers will understand “Vanilla” and “Natural Flavor” as meaning a product is flavored with natural vanilla flavor, from the vanilla bean.

25. Defendant’s ingredient list identifies “Natural Flavor” but this fails to clarify the misleading front label representations.



**INGREDIENTS:** ALMOND MILK (WATER, ALMONDS), CANE SUGAR, COCONUT OIL, PEA PROTEIN, BAKING SODA, **NATURAL FLAVOR**, SEA SALT, GELLAN GUM, GUAR GUM (FROM THE GUAR PLANT).

26. “Natural Flavor” is a technical term for an ingredient which is a mix of flavors and does not consist only of vanilla.

---

<sup>1</sup> John B. Hallagan and Joanna Drake, FEMA, “[Labeling Vanilla Flavorings and Vanilla-Flavored Foods in the U.S.](#),” *Perfumer & Flavorist*, Vol. 43 at p. 46, Apr. 25, 2018 (“Hallagan & Drake”); FEMA is the trade group for the flavor industry.

27. However, consumers are unable to know how much, if any vanilla is part of the Natural Flavor ingredient.

28. Nevertheless, lab testing reveals an abnormal excess of vanillin relative to the odor-active compounds in authentic vanilla, an indicator of artificial vanillin.

29. Consumers seek to avoid foods with flavors from sources other than their characterizing ingredients – orange flavor from oranges and vanilla flavor from vanilla.

30. The reasons for these preferences include health and nutrition purposes, because they are highly processed with chemical additives in laboratories instead of made through simple techniques like alcohol extraction.

31. Because vanillin is responsible for between one-quarter (25%) and one-third (33%) of the overall flavor/aroma impact of vanilla, the added vanillin skews the balance of flavor compounds which consumers associate with vanilla from vanilla beans.

32. According to FEMA and the FDA, it is misleading to label a food such as the Product “Vanilla” accompanied by the term “Natural Flavor,” with the image of the vanilla beans and vanilla flower because this implies the Product is naturally flavored with vanilla, even though the flavor is not derived from vanilla beans. FDA Letter to Richard Brownell, February 25, 2016.

33. Even if the Product purports to contain added vanillin described as “natural vanillin,” such an ingredient does not exist.

34. This is because natural vanillin is only present as part of vanilla, instead of separated.

35. According to FEMA and the FDA, any non-vanilla flavor compounds that simulate vanilla but are not derived from vanilla beans considered artificial flavors that simulate the natural characterizing flavor.

36. This is consistent with the vanilla standards, which identify vanillin as an artificial

flavor when used with vanilla extract. 21 C.F.R. § 169.180(b).

37. Since the Product's flavoring is predominantly from non-vanilla and its characterizing flavor is vanilla, the food must be identified as artificially flavored or "contains artificial flavor."<sup>2</sup> 21 C.F.R. § 101.22(i).

38. By omitting "artificially flavored" from the front label, consumers are not told that the taste is from added vanillin.

39. By using the term "natural flavor" with "Vanilla" on the front label, consumers are told the Product has a vanilla taste from vanilla ingredients.

40. The ingredient listing of "Natural Flavor" is misleading because it does not identify vanillin as an ingredient nor discloses the presence of artificial flavors such as vanillin.

41. Vanillin alone cannot provide vanilla flavor because it lacks the above-described odor-active compounds present in vanilla.

42. The Product's flavoring lacks the complexity and flavor notes associated with vanilla because vanillin has never been synonymous with vanilla.

43. Defendant knows consumers will pay more for the Product because the front label states vanilla and "Natural Flavor" instead of "artificially flavored" or "does not taste like real vanilla."

44. Consumers are unable to know that the "natural flavor" refers to vanillin.

45. Defendant's omission and failure to disclose these facts is deceptive and misleading to consumers who want a vanilla flavored product that contains flavoring mainly or exclusively from vanilla beans and tastes like vanilla.

46. Defendant's branding and packaging of the Product is designed to – and does –

---

<sup>2</sup> Hallagan at 48.

deceive, mislead, and defraud plaintiff and consumers.

47. Defendant sold more of the Product and at higher prices than it would have in the absence of this misconduct, resulting in additional profits at the expense of consumers.

48. The value of the Product that plaintiff purchased and consumed was materially less than its value as represented by defendant.

49. Had plaintiff and class members known the truth, they would not have bought the Product or would have paid less for them.

50. As a result of the false and misleading labeling, the Product is sold at a premium price, approximately no less than \$5.49 per 32 OZ compared to other similar products represented in a non-misleading way, and higher than the price of the Product if it were represented in a non-misleading way.

#### Jurisdiction and Venue

51. Jurisdiction is proper pursuant to Class Action Fairness Act of 2005 (“CAFA”). 28 U.S.C. § 1332(d)(2)

52. Under CAFA, district courts have “original federal jurisdiction over class actions involving (1) an aggregate amount in controversy of at least \$5,000,000; and (2) minimal diversity[.]” *Gold v. New York Life Ins. Co.*, 730 F.3d 137, 141 (2d Cir. 2013).

53. Plaintiff Corey Prescott is a citizen of New York.

54. Defendant Nestlé Holdings, Inc. is a Delaware corporation with a principal place of business in Arlington, Arlington County, Virginia and is a citizen of Virginia.

55. “Minimal diversity” exists because plaintiff Corey Prescott and defendant are citizens of different states.

56. Upon information and belief, sales of the Product exceed \$5 million during the



applicable statutes of limitations, exclusive of interest and costs.

57. Venue is proper in this because Plaintiff Corey Prescott resides in this District and a substantial part of the events or omissions giving rise to the claim occurred here.

58. Venue is further supported because many class members reside in this District.

#### Parties

59. Plaintiff Corey Prescott is a citizen of Brooklyn, Kings County, New York.

60. Defendant Nestlé Holdings, Inc. is a Delaware corporation with a principal place of business in Arlington, Virginia, Arlington County.

61. During the relevant statutes of limitations for each cause of action alleged, plaintiff purchased the Product within his district and/or State for personal and household consumption and/or use in reliance on the representations of the Product.

62. Plaintiff purchased the Product on more than one occasion, including on or around June 19, 2020 at stores including but not necessarily limited to Foodtown, 9105-27 3rd Ave, Brooklyn, NY 11209.

63. Plaintiff bought the Product at or exceeding the above-referenced price because he liked the product for its intended use and relied upon the front label claims, expected a vanilla taste, and that such taste would come exclusively and/or predominantly from vanilla beans and did not expect a taste of vanillin, provided by artificial vanilla flavors.

64. Plaintiff bought the Product at or exceeding the above-referenced price because he liked the product for its intended use and relied upon the front label claims, expected a vanilla taste, and that such taste would come exclusively and/or predominantly from vanilla beans and did not expect a taste of vanillin, provided by artificial vanilla flavors.

65. Plaintiff was deceived by and relied upon the Product's deceptive labeling.

66. Plaintiff would not have purchased the Product in the absence of Defendant's

misrepresentations and omissions.

67. The Product was worth less than what Plaintiff paid for it and he would not have paid as much absent Defendant's false and misleading statements and omissions.

68. Plaintiff intends to, seeks to, and will purchase the Product again when he can do so with the assurance that Product's labels are consistent with the Product's components.

#### Class Allegations

69. The class will consist of all purchasers of the Product who reside in New York during the applicable statutes of limitations.

70. Plaintiff seeks class-wide injunctive relief based on Rule 23(b) in addition to a monetary relief class.

71. Common questions of law or fact predominate and include whether defendant's representations were and are misleading and if plaintiff and class members are entitled to damages.

72. Plaintiff's claims and basis for relief are typical to other members because all were subjected to the same unfair and deceptive representations and actions.

73. Plaintiff is an adequate representative because his interests do not conflict with other members.

74. No individual inquiry is necessary since the focus is only on defendant's practices and the class is definable and ascertainable.

75. Individual actions would risk inconsistent results, be repetitive and are impractical to justify, as the claims are modest relative to the scope of the harm.

76. Plaintiff's counsel is competent and experienced in complex class action litigation and intends to protect class members' interests adequately and fairly.

77. Plaintiff seeks class-wide injunctive relief because the practices continue.

New York General Business Law (“GBL”) §§ 349 & 350  
(Consumer Protection Statutes)

78. Plaintiff incorporates by reference all preceding paragraphs.

79. Plaintiff and class members desired to purchase and consume products which were as described and marketed by defendant and expected by reasonable consumers, given the product type.

80. Defendant’s acts and omissions are not unique to the parties and have a broader impact on the public.

81. Defendant misrepresented the substantive, quantitative, qualitative, compositional and/or organoleptic attributes of the Product.

82. Despite the claim it does not have artificial flavors, ethyl vanillin, vanillin and piperonal are artificial flavors.

83. The amount and proportion of the characterizing component, vanilla, has a material bearing on price and consumer acceptance of the Product.

84. Plaintiff expected the Product to have more vanilla than it did and did not expect added vanillin since the label said “natural flavor.”

85. Plaintiff expected a vanilla tasting product which he did not receive.

86. Plaintiff relied on the statements, omissions and representations of defendant, and defendant knew or should have known the falsity of same.

87. Plaintiff and class members would not have purchased the Product or paid as much if the true facts had been known, suffering damages.

Negligent Misrepresentation

88. Plaintiff incorporates by reference all preceding paragraphs.

89. Defendant misrepresented the substantive, quantitative, qualitative, compositional

and/or organoleptic attributes of the Product.

90. The amount and proportion of the characterizing component, vanilla, has a material bearing on price and consumer acceptance of the Product.

91. Plaintiff expected the Product to have more vanilla than it did and did not expect added vanillin since the label said “natural flavor.”

92. Plaintiff expected a vanilla tasting product which he did not receive.

93. Defendant had a duty to disclose the non-vanilla, artificial flavors and tell consumers the Product did not taste like vanilla because it lacked sufficient amounts of the compounds which provide the characteristic vanilla taste.

94. This duty is based on defendant’s position as an entity which has held itself out as having special knowledge and experience in the production, service and/or sale of the product type.

95. The representations took advantage of consumers’ cognitive shortcuts made at the point-of-sale and their trust in defendant, a well-known and respected brand or entity in this sector.

96. Plaintiff and class members reasonably and justifiably relied on these negligent misrepresentations and omissions, which served to induce and did induce, the purchase of the Product.

97. Plaintiff and class members would not have purchased the Product or paid as much if the true facts had been known, suffering damages.

Breaches of Express Warranty, Implied Warranty of Merchantability and Magnuson Moss Warranty Act, 15 U.S.C. §§ 2301, et seq.

98. Plaintiff incorporates by reference all preceding paragraphs.

99. The Product was manufactured, labeled and sold by defendant or at its express directions and instructions, and warranted to plaintiff and class members that they possessed substantive, quality, organoleptic, and/or compositional attributes it did not.

100. Defendant had a duty to disclose and/or provide non-deceptive descriptions and marketing of the Product.

101. This duty is based, in part, on defendant's position as one of the most recognized companies in the nation in this sector.

102. Plaintiff provided or will provide notice to defendant, its agents, representatives, and their employees.

103. Defendant received notice and should have been aware of these misrepresentations due to numerous complaints by consumers to its main office over the past several years regarding the Product, of the type described here.

104. The Product did not conform to its affirmations of fact and promises due to defendant's actions and were not merchantable because plaintiffs expected a product that contained enough vanilla relative to any other flavorings in the Product to taste like vanilla.

105. Plaintiff and class members would not have purchased the Product or paid as much if the true facts had been known, suffering damages.

Fraud

106. Plaintiff incorporates by reference all preceding paragraphs.

107. Defendant misrepresented the substantive, quality, compositional and/or organoleptic attributes of the Product.

108. The amount and proportion of the characterizing component, vanilla, has a material bearing on price and consumer acceptance of the Product.

109. Plaintiff expected the Product to have more vanilla than it did and did not expect added vanillin.

110. Plaintiff expected a vanilla tasting product which he did not receive.

111. Defendant's fraudulent intent is evinced by its failure to accurately identify the Product on the front label and ingredient list, when it knew its statements were neither true nor accurate and misled consumers.

112. Plaintiff and class members would not have purchased the Product or paid as much if the true facts had been known, suffering damages.

Unjust Enrichment

113. Plaintiff incorporates by reference all preceding paragraphs.

114. Defendant obtained benefits and monies because the Product was not as represented and expected, to the detriment and impoverishment of plaintiff and class members, who seek restitution and disgorgement of inequitably obtained profits.

Jury Demand and Prayer for Relief

Plaintiff demands a jury trial on all issues.

**WHEREFORE**, Plaintiff prays for judgment:

1. Declaring this a proper class action, certifying plaintiff as representative and the undersigned as counsel for the class;
2. Entering preliminary and permanent injunctive relief by directing defendant to correct the challenged practices to comply with the law;
3. Injunctive relief to remove, correct and/or refrain from the challenged practices and representations, and restitution and disgorgement for members of the class pursuant to the applicable laws;
4. Awarding monetary damages and interest pursuant to the common law and other statutory claims;
5. Awarding costs and expenses, including reasonable fees for plaintiff's attorneys and experts; and

6. Other and further relief as the Court deems just and proper.

Dated: November 22, 2020

Respectfully submitted,

Sheehan & Associates, P.C.

/s/Spencer Sheehan

Spencer Sheehan

60 Cuttermill Rd Ste 409

Great Neck NY 11021-3104

Tel: (516) 268-7080

Fax: (516) 234-7800

*spencer@spencersheehan.com*

E.D.N.Y. # SS-8533

S.D.N.Y. # SS-2056

1:20-cv-05683  
United States District Court  
Eastern District of New York

---

Corey Prescott, individually and on behalf of all others similarly situated,

Plaintiff,

- against -

Nestlé Holdings, Inc.,

Defendant

---

Complaint

---

Sheehan & Associates, P.C.  
60 Cuttermill Rd Ste 409  
Great Neck NY 11021-3104  
Tel: (516) 268-7080  
Fax: (516) 234-7800

---

Pursuant to 22 NYCRR 130-1.1, the undersigned, an attorney admitted to practice in the courts of New York State, certifies that, upon information, and belief, formed after an inquiry reasonable under the circumstances, the contentions contained in the annexed documents are not frivolous.

Dated: November 22, 2020

/s/ Spencer Sheehan  
Spencer Sheehan



**CIVIL COVER SHEET**

The JS 44 civil cover sheet and the information contained herein neither replace nor supplement the filing and service of pleadings or other papers as required by law, except as provided by local rules of court. This form, approved by the Judicial Conference of the United States in September 1974, is required for the use of the Clerk of Court for the purpose of initiating the civil docket sheet. (SEE INSTRUCTIONS ON NEXT PAGE OF THIS FORM.)

**I. (a) PLAINTIFFS**

Corey Prescott, individually and on behalf of all others similarly situated

(b) County of Residence of First Listed Plaintiff Kings  
(EXCEPT IN U.S. PLAINTIFF CASES)

(c) Attorneys (Firm Name, Address, and Telephone Number)  
Sheehan & Associates, P.C., 60 Cuttermill Rd Ste 409 Great Neck NY 11021-3104 (516) 268-7080

**DEFENDANTS**

Nestlé Holdings, Inc.

County of Residence of First Listed Defendant \_\_\_\_\_  
(IN U.S. PLAINTIFF CASES ONLY)

NOTE: IN LAND CONDEMNATION CASES, USE THE LOCATION OF THE TRACT OF LAND INVOLVED.

Attorneys (If Known)

**II. BASIS OF JURISDICTION** (Place an "X" in One Box Only)

- 1 U.S. Government Plaintiff
- 2 U.S. Government Defendant
- 3 Federal Question (U.S. Government Not a Party)
- 4 Diversity (Indicate Citizenship of Parties in Item III)

**III. CITIZENSHIP OF PRINCIPAL PARTIES** (Place an "X" in One Box for Plaintiff and One Box for Defendant)

- |                                         |                                       |                            |                                                               |                            |                                       |
|-----------------------------------------|---------------------------------------|----------------------------|---------------------------------------------------------------|----------------------------|---------------------------------------|
|                                         | <b>PTF</b>                            | <b>DEF</b>                 |                                                               | <b>PTF</b>                 | <b>DEF</b>                            |
| Citizen of This State                   | <input checked="" type="checkbox"/> 1 | <input type="checkbox"/> 1 | Incorporated or Principal Place of Business In This State     | <input type="checkbox"/> 4 | <input type="checkbox"/> 4            |
| Citizen of Another State                | <input type="checkbox"/> 2            | <input type="checkbox"/> 2 | Incorporated and Principal Place of Business In Another State | <input type="checkbox"/> 5 | <input checked="" type="checkbox"/> 5 |
| Citizen or Subject of a Foreign Country | <input type="checkbox"/> 3            | <input type="checkbox"/> 3 | Foreign Nation                                                | <input type="checkbox"/> 6 | <input type="checkbox"/> 6            |

**IV. NATURE OF SUIT** (Place an "X" in One Box Only)

CONTRACT	TORTS		FORFEITURE/PENALTY	BANKRUPTCY	OTHER STATUTES
<input type="checkbox"/> 110 Insurance <input type="checkbox"/> 120 Marine <input type="checkbox"/> 130 Miller Act <input type="checkbox"/> 140 Negotiable Instrument <input type="checkbox"/> 150 Recovery of Overpayment & Enforcement of Judgment <input type="checkbox"/> 151 Medicare Act <input type="checkbox"/> 152 Recovery of Defaulted Student Loans (Excludes Veterans) <input type="checkbox"/> 153 Recovery of Overpayment of Veteran's Benefits <input type="checkbox"/> 160 Stockholders' Suits <input type="checkbox"/> 190 Other Contract <input type="checkbox"/> 195 Contract Product Liability <input type="checkbox"/> 196 Franchise	<b>PERSONAL INJURY</b> <input type="checkbox"/> 310 Airplane <input type="checkbox"/> 315 Airplane Product Liability <input type="checkbox"/> 320 Assault, Libel & Slander <input type="checkbox"/> 330 Federal Employers' Liability <input type="checkbox"/> 340 Marine <input type="checkbox"/> 345 Marine Product Liability <input type="checkbox"/> 350 Motor Vehicle <input type="checkbox"/> 355 Motor Vehicle Product Liability <input type="checkbox"/> 360 Other Personal Injury <input type="checkbox"/> 362 Personal Injury - Medical Malpractice	<b>PERSONAL INJURY</b> <input type="checkbox"/> 365 Personal Injury - Product Liability <input type="checkbox"/> 367 Health Care/Pharmaceutical Personal Injury Product Liability <input type="checkbox"/> 368 Asbestos Personal Injury Product Liability <b>PERSONAL PROPERTY</b> <input checked="" type="checkbox"/> 370 Other Fraud <input type="checkbox"/> 371 Truth in Lending <input type="checkbox"/> 380 Other Personal Property Damage <input type="checkbox"/> 385 Property Damage Product Liability	<input type="checkbox"/> 625 Drug Related Seizure of Property 21 USC 881 <input type="checkbox"/> 690 Other  <b>LABOR</b> <input type="checkbox"/> 710 Fair Labor Standards Act <input type="checkbox"/> 720 Labor/Management Relations <input type="checkbox"/> 740 Railway Labor Act <input type="checkbox"/> 751 Family and Medical Leave Act <input type="checkbox"/> 790 Other Labor Litigation <input type="checkbox"/> 791 Employee Retirement Income Security Act  <b>IMMIGRATION</b> <input type="checkbox"/> 462 Naturalization Application <input type="checkbox"/> 465 Other Immigration Actions	<input type="checkbox"/> 422 Appeal 28 USC 158 <input type="checkbox"/> 423 Withdrawal 28 USC 157  <b>PROPERTY RIGHTS</b> <input type="checkbox"/> 820 Copyrights <input type="checkbox"/> 830 Patent <input type="checkbox"/> 840 Trademark  <b>SOCIAL SECURITY</b> <input type="checkbox"/> 861 HIA (1395ff) <input type="checkbox"/> 862 Black Lung (923) <input type="checkbox"/> 863 DIWC/DIWW (405(g)) <input type="checkbox"/> 864 SSID Title XVI <input type="checkbox"/> 865 RSI (405(g))  <b>FEDERAL TAX SUITS</b> <input type="checkbox"/> 870 Taxes (U.S. Plaintiff or Defendant) <input type="checkbox"/> 871 IRS—Third Party 26 USC 7609	<input type="checkbox"/> 375 False Claims Act <input type="checkbox"/> 376 Qui Tam (31 USC 3729(a)) <input type="checkbox"/> 400 State Reapportionment <input type="checkbox"/> 410 Antitrust <input type="checkbox"/> 430 Banks and Banking <input type="checkbox"/> 450 Commerce <input type="checkbox"/> 460 Deportation <input type="checkbox"/> 470 Racketeer Influenced and Corrupt Organizations <input type="checkbox"/> 480 Consumer Credit <input type="checkbox"/> 490 Cable/Sat TV <input type="checkbox"/> 850 Securities/Commodities/Exchange <input type="checkbox"/> 890 Other Statutory Actions <input type="checkbox"/> 891 Agricultural Acts <input type="checkbox"/> 893 Environmental Matters <input type="checkbox"/> 895 Freedom of Information Act <input type="checkbox"/> 896 Arbitration <input type="checkbox"/> 899 Administrative Procedure Act/Review or Appeal of Agency Decision <input type="checkbox"/> 950 Constitutionality of State Statutes

**V. ORIGIN** (Place an "X" in One Box Only)

- 1 Original Proceeding
- 2 Removed from State Court
- 3 Remanded from Appellate Court
- 4 Reinstated or Reopened
- 5 Transferred from Another District (specify)
- 6 Multidistrict Litigation

**VI. CAUSE OF ACTION**

Cite the U.S. Civil Statute under which you are filing (Do not cite jurisdictional statutes unless diversity):

28 USC § 1332

Brief description of cause:

False advertising

**VII. REQUESTED IN COMPLAINT:**

CHECK IF THIS IS A CLASS ACTION UNDER RULE 23, F.R.Cv.P.

DEMAND \$ 5,000,000

CHECK YES only if demanded in complaint:  
**JURY DEMAND:**  Yes  No

**VIII. RELATED CASE(S) IF ANY**

(See instructions):

DATE 11/22/2020 JUDGE \_\_\_\_\_ DOCKET NUMBER \_\_\_\_\_  
SIGNATURE OF ATTORNEY OF RECORD /s/ Spencer Sheehan

**FOR OFFICE USE ONLY**

RECEIPT # \_\_\_\_\_ AMOUNT \_\_\_\_\_ APPLYING IFP \_\_\_\_\_ JUDGE \_\_\_\_\_ MAG. JUDGE \_\_\_\_\_

CERTIFICATION OF ARBITRATION ELIGIBILITY

Local Arbitration Rule 83.7 provides that with certain exceptions, actions seeking money damages only in an amount not in excess of \$150,000, exclusive of interest and costs, are eligible for compulsory arbitration. The amount of damages is presumed to be below the threshold amount unless a certification to the contrary is filed.

Case is Eligible for Arbitration

I, Spencer Sheehan, counsel for plaintiff, do hereby certify that the above captioned civil action is ineligible for compulsory arbitration for the following reason(s):

- 

monetary damages sought are in excess of \$150,000, exclusive of interest and costs,
the complaint seeks injunctive relief,
the matter is otherwise ineligible for the following reason

DISCLOSURE STATEMENT - FEDERAL RULES CIVIL PROCEDURE 7.1

Identify any parent corporation and any publicly held corporation that owns 10% or more of its stocks:

RELATED CASE STATEMENT (Section VIII on the Front of this Form)

Please list all cases that are arguably related pursuant to Division of Business Rule 50.3.1 in Section VIII on the front of this form. Rule 50.3.1 (a) provides that "A civil case is "related" to another civil case for purposes of this guideline when, because of the similarity of facts and legal issues or because the cases arise from the same transactions or events, a substantial saving of judicial resources is likely to result from assigning both cases to the same judge and magistrate judge." Rule 50.3.1 (b) provides that " A civil case shall not be deemed "related" to another civil case merely because the civil case: (A) involves identical legal issues, or (B) involves the same parties." Rule 50.3.1 (c) further provides that "Presumptively, and subject to the power of a judge to determine otherwise pursuant to paragraph (d), civil cases shall not be deemed to be "related" unless both cases are still pending before the court."

NY-E DIVISION OF BUSINESS RULE 50.1(d)(2)

- 1.) Is the civil action being filed in the Eastern District removed from a New York State Court located in Nassau or Suffolk County?  Yes  No
2.) If you answered "no" above:
a) Did the events or omissions giving rise to the claim or claims, or a substantial part thereof, occur in Nassau or Suffolk County?  Yes  No
b) Did the events or omissions giving rise to the claim or claims, or a substantial part thereof, occur in the Eastern District?  Yes  No
c) If this is a Fair Debt Collection Practice Act case, specify the County in which the offending communication was received:

If your answer to question 2 (b) is "No," does the defendant (or a majority of the defendants, if there is more than one) reside in Nassau or Suffolk County, or, in an interpleader action, does the claimant (or a majority of the claimants, if there is more than one) reside in Nassau or Suffolk County?  Yes  No

(Note: A corporation shall be considered a resident of the County in which it has the most significant contacts).

BAR ADMISSION

I am currently admitted in the Eastern District of New York and currently a member in good standing of the bar of this court.

Yes  No

Are you currently the subject of any disciplinary action (s) in this or any other state or federal court?

Yes (If yes, please explain)  No

I certify the accuracy of all information provided above.

Signature: /s/Spencer Sheehan

AO 440 (Rev. 06/12) Summons in a Civil Action

UNITED STATES DISTRICT COURT

for the Eastern District of New York

Corey Prescott, individually and on behalf of all others similarly situated,

Plaintiff(s)

v.

Nestlé Holdings, Inc.,

Defendant(s)

Civil Action No. 1:20-cv-05683

SUMMONS IN A CIVIL ACTION

To: (Defendant's name and address) Nestlé Holdings, Inc. c/o The Corporation Trust Company 1209 N Orange St Wilmington DE 19801-1120

A lawsuit has been filed against you.

Within 21 days after service of this summons on you (not counting the day you received it) — or 60 days if you are the United States or a United States agency, or an officer or employee of the United States described in Fed. R. Civ. P. 12 (a)(2) or (3) — you must serve on the plaintiff an answer to the attached complaint or a motion under Rule 12 of the Federal Rules of Civil Procedure. The answer or motion must be served on the plaintiff or plaintiff's attorney, whose name and address are: Sheehan & Associates, P.C., 60 Cuttermill Rd Ste 409 Great Neck NY 11021-3104 (516) 268-7080

If you fail to respond, judgment by default will be entered against you for the relief demanded in the complaint. You also must file your answer or motion with the court.

CLERK OF COURT

Date:

Signature of Clerk or Deputy Clerk