

WARRANTY FOR
FULL TIME RVING*

*REFERENCE KEYSTONE RV COMPANY OWNERS MANUAL FOR LIMITED WARRANTY DETAILS

Cougar

EASTERN

MID-PROFILE FIFTH WHEELS

HALF-TON FIFTH WHEELS

HALF-TON TRAVEL TRAILERS

FORCE OF NATURE



The ultimate ownership experience.

The goal of Keystone RV Company is to surprise and delight our owners at each and every touchpoint. We're happy when our campers are happy, and we are committed to providing the very best ownership experience in the industry.



1 EASIER SHOPPING.

At Keystone, we make choosing an RV as easy as finding the Big Dipper on a dark summer night. With comprehensive online product information, Key Connect™ product advisors, and an unparalleled dealer network, we will help you select the perfect RV for your family's adventure.

2 INNOVATIVE THINKING.

The road's a nicer place when you have the industry's smartest features behind you. Keystone leads the pack in patented innovations that make our RVs safer, more comfortable, and easier to operate.

3 LONG HAUL QUALITY.

To keep you on the road, there are certain things we just won't build a Keystone RV without. Game-changing features like our Unified Wiring Standard, Tru-Fit™ five-point slide construction, and no-fail Tuf-Lok™ A/C duct joiners combined with exhaustive testing and inspections are some of the reasons why Keystone is able to offer our owners the industry's best 3-year limited structural warranty.

4 WORRY-FREE CUSTOMER SERVICE.

Wherever the road takes you, you're never too far from an authorized Keystone service center. We also offer live service assistance, ultra-fast parts shipping, online maintenance tips and tricks, and a single-point warranty claims policy. *That's* peace of mind.

5 KEYSTONE NATION.

When you choose Keystone, you become a part of one of the largest camping families in the country. We're Keystone Nation. A friendly community where people share photos, travel tips and amazing stories – all in the spirit of camaraderie and adventure. Come join us.

Experience the Cougar lifestyle by visiting [#keystonecougar](#)



Keystone EXCLUSIVE Innovations

Year after year, Keystone RV's experienced team delivers Built For the Long Haul quality you expect and exclusive innovations you won't find anywhere else.



3-year Limited Structural Warranty, 1-year Limited Base Warranty

Every new Keystone RV comes with the industry's best three-year limited structural warranty AND a one-year limited base warranty. Ask your dealer, visit keystonerv.com, or call Keystone Owner Relations for details.



4G LTE and Wi-Fi Prep

All Cougars are equipped with a new Furrion® antenna that integrates 4G LTE and Wi-Fi with standard VHF/UHF/AM/FM reception.



KeyTV™

No more connection guesswork or poor reception. KeyTV offers a game-changing, single point of control of over-the-air, cable, and satellite feeds. Visit us online for more information.



Color-Coded Wiring Standard

Easy-to-trace circuits simplify electrical and entertainment system troubleshooting.



Hitch Vision™

Simplifies hitch hook-up with "no looking back" convenience.



In-floor Heating Ducts

Distributes heat evenly for greater comfort.



Road Armor™ Suspension

Equalizes axle load to dampen shock and vibration.



Tru-Fit™ Slide Construction

A more durable slide room design that minimizes functional motor and structural stress, resists leaking.

WARRANTY FOR
FULL TIME RVING*

*REFERENCE KEYSTONE RV COMPANY OWNERS MANUAL FOR LIMITED WARRANTY DETAILS

COUGAR



MID-PROFILE FIFTH WHEELS | HALF-TON FIFTH WHEELS | HALF-TON TRAVEL TRAILERS

Engineering and design that starts with the customer.

Committed to innovation, quality, style and affordability, Keystone's Cougar brand sells more mid-profile fifth wheels and luxury travel trailers than any other brand. The Cougar line-up is designed to grow with your family, from your first RV to your last. Cougar takes the time to understand how you travel in each life stage, so that we can provide families with the best camping experiences, year after year, Cougar after Cougar. You can count on every Cougar to deliver user-friendly floorplans, unparalleled towability, innovative features and luxurious touches that make it America's most-awarded RV brand.

For more information, please visit keystonerv.com/cougar

#1 SELLING MID-PROFILE FIFTH WHEEL AND LUXURY TRAVEL TRAILER FOR THE PAST TWENTY YEARS.



[OVER 150,000 COUGARS ON THE ROAD TODAY.]

SEE OUR LEGENDARY DISPLAY AT THE RV HALL OF FAME.



more product detail at
www.keystonerv.com/Cougar



SEATLERS SHOWN IN TWIG DÉCOR

A Legacy of Style

The Cougar brand is thoughtfully designed to be polished, classic and timeless. Rather than chasing fads, we spend a good deal of time communicating with our owners in order to enhance and perfect the interior elements that are most important to them.

All Cougars feature ultra-comfortable rolled-arm, pillow-top seating. Theater recliners with built-in beverage holders sit across from a large entertainment center with a 48" fireplace—perfect for a rainy day or a family movie night. Cougars also have a new booth dinette with a free-standing dinette option. Bedrooms are designed with loads of closet and dresser storage.



Twig Décor

Rich and inviting, espresso brown upholstered furniture is complemented with handsome leather-wrapped window valances and tonal shades. (Pictured right.)



NEW Storm Décor

The design team took everything owners love about Cougar interiors and brightened it up. Upholstered seating and window valances move to a light stone gray for a more refreshing take on our classic style. (Pictured left.)





more product detail at
www.keystonerv.com/Cougar



361RLW MASTER SUITE



361RLW DRESSER

Master Suite Mastery

Flooded with natural light from our patented front windshield, the 361RLW delivers the master suite of your dreams. We have maximized storage with deeper drawers, larger wardrobes and expanded vanity space in the en suite bathroom.



361RLW WARDROBE



362RKS KITCHEN AND BAR



362RKS DINETTE AND ENTERTAINMENT

Entertain in Style




Cougar goes all-in on campsite entertaining with this open-concept 362RKS floorplan. Welcome family and friends with a chef's kitchen, plentiful seating, and best-in-class entertainment center.



362RKS LIVING ROOM SHOWN IN STORM DECOR



more product detail at
www.keystonerv.com/Cougar






-  **Standard 15,000 BTU Main A/C and Exclusive Tuf-Lok™ Duct Joiners** – Exclusive Tuf-Lok thermoplastic duct-joiners allow maximum airflow from roof-installed ductwork.
-  **Optional 13,500 BTU Ducted Second A/C (N/A 22RBS)** – Cougars have an optional ducted and thermostatically controlled 2nd A/C.
-  **Radiant Foil Barrier in Front Cap** – Radiant foil reduces amount of radiant heat that can come from the units front cap during summer months.

Hot & Cold Weather Protection

All models to a tested temperature rating up to 110°F and down to 0°F*



-  **Remote Temperature Probes and Gen. 3 In-Command** – Provides more accurate temperature readings, has timed on/off procedures, and can be monitored and controlled from anywhere with a smartphone.
-  **Double Insulated Laminated Rear Wall** – Cougar's exclusive design combines rolled fiberglass and a second layer of styrene insulation providing the best insulation for the RV.
-  **Insulated Gooseneck, Bulkhead divider, and Sealed Pin Box (5th Wheels)** – Cougar comes with a fiberglass insulated gooseneck, bulkhead divider wall, and a foam gasket sealed pin box moderating the upper deck temperature.
-  **Insulated Slide Floors** – Unlike basic radiant foil, Astro-Foil has air pockets for insulation installed into the slide floors, keeping the warm air in, and cold air out.
-  **Two Roof Attic Vents** – In hot climates, attic vents help release hot air that often gets trapped under the roof decking. In cold climates attic vents help to release moisture, reducing the amount of condensation.

-  **Heated Pass-Through Storage (fifth wheels)** – Cougar places a heat register behind the convenience center in the pass-through storage to prevent water lines from freezing.
-  **12 Volt Electric Heat Pads on All Holding Tanks** – Provides additional heat to the holding tanks while camping in cold climates and can also be used while in transit.
-  **35,000 BTU Furnace, and 5,500 BTU Electric Fireplace (most models)** – Unlike most competitors, Cougars have a 35,000 BTU furnace and most models have a 5,500 BTU fireplace, providing over 40,000 BTU's of heat.
-  **Heated and Enclosed Underbelly** – The sealed Coroplast underbelly has a layer of Astro-Foil insulation beneath the holding tanks, and fiberglass insulation above the tanks, while a heat duct is ran adjacent to the waterlines where heat is dumped around the fresh tank, keeping your tanks, waterlines, and gate valves from freezing.
-  **PEX Plumbing** – Resistant to corrosion, pitting, and scaling, this residential plumbing is installed using fewer fittings, reducing potential leak points. PEX retains more heat in the hot water lines, while lessening condensation in the cold water lines than traditional copper or CPVC plumbing. PEX also expands up to three times its diameter if water in the lines freeze.



NEVER LOSE YOUR CONTROLLER • MULTIPLE USERS* • WHEN YOU HAVE YOUR PHONE, YOU'RE IN-COMMAND
*Multiple users with Android phones (N/A with iOS)

iN-Command® Generation 3 with Global Connect

New iN-Command Gen. 3 w/Global Connect is an innovative, next-level system that brings smart home technology to your Cougar. From a convenient master control panel or your smartphone, you are in complete command of your RV.

- Full remote thermostat control including scheduling with mobile app
- Available app for Android and iOS
- Multiple users (android phones, one user with iOS)
- Control slide rooms, awnings, and light groups with mobile app or touch screen display commander
- Panic/intruder alert
- Manual overrides on body control module (BCM)

EXCLUSIVE MaxTurn Technology™ with Hitch Vision™

Cougar's MaxTurn Technology allows owners to confidently navigate through tighter turns than traditional fifth wheel designs – even with short bed pickup trucks. Our patented frame design made from continuous tubular steel, combined with a tapered fiberglass cap, and a heavy duty extended hitch allows tow vehicles to make up to a 95.66° turn. MaxTurn also eliminates complicated and expensive swivel hitch pins that require inconvenient periodic maintenance.



MAX TURN EXPECTED TURNING RADIUS [6'6" TRUCK BED]		
Length of Truck Bed	Standard Fifth Wheel Hitch	Sliding Fifth Wheel Hitch
6' 6"	83.33°	95.66°



Cougar One-Touch Auto Level System

Save time and energy knowing that Cougar comes with the industry's #1 electric leveling system.

- One-touch, 4-point automated level system control panel for quick and easy setup
- Hitch memory function that remembers the height at which your unit was unhitched
- Automatically finds level within a tenth of a degree
- Prevents damage to chassis, sidewalls and windows

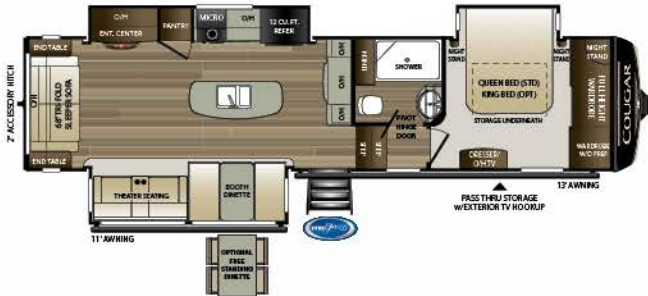


more product detail at
www.keystonerv.com/Cougar

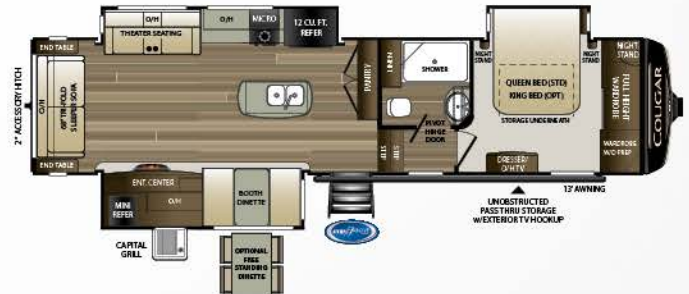
Cougar | MID-PROFILE FIFTH WHEELS

- EXCLUSIVE 90° plus MaxTurn Technology™ frame and hitch design for unparalleled maneuverability
- EXCLUSIVE Hitch Vision™ for faster and easier hook-up
- NEW iN-Command® Generation 3 w/ Global Connect control system gives owners total control over power, slide rooms, awnings, HVAC and more, from a convenient master control panel as well as an enabled smartphone application
- Climate Guard Protection Package: Zero to 110 degree rated, larger heating and cooling units, with in-floor heat ducting, 12V heat pads, racetrack A/C ducting, and increased insulation
- Exceptionally durable and waterproof patent-pending automotive windshield design (select models)
- Ultra-stable and secure MORryde® Step Above™ steps
- Best-in-class unobstruction exterior pass-through storage and oversized baggage doors
- EXCLUSIVE Road Armor™ suspension equalizes axle load to dampen shock and vibration
- Road Armor™ pin box - rubberized torsion compound absorbs motion and vibration caused by road shock
- Best-in-class holding tank capacities
- Upgraded exterior Capital Grill BBQ (outside kitchen models)
- Standard Ground Control® 3.0 auto leveling system
- 50" 4K living room television (all models)
- Self-adjusting brakes, reverse taillights and backup camera prep
- 35,000 BTU furnace and 15,000 BTU air conditioner
- Dyna Span® seamless floor decking with 25-year warranty
- 2" accessory hitch receiver with 300 lb. capacity
- NEW modern interior styling with pillow-top seating, fold-flat sofa, and dimmable LED lighting in main slide
- KeyTV™: A simplified multisource signal controller that distributes satellite, cable, and over-the-air feeds via a single coax cable to every television
- Gas/electric, oversized four-door refrigerator
- Standard bedroom slide-out with optional king bed
- 30" x 50" residential-sized shower with seat (N/A 367FLS)
- Washer/dryer prep standard (all models)
- Furrion® range and 22" oven with glass cooktop cover and Piezo ignition





315RLS | Rear living room, three slides
Weight: 10562 LBS. | Length: 35' 8"



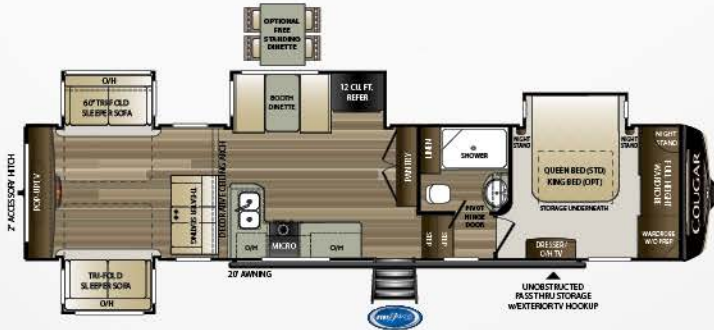
338RLK | Rear living room, outside kitchen
Weight: 10681 lbs. | Length: 36' 5"



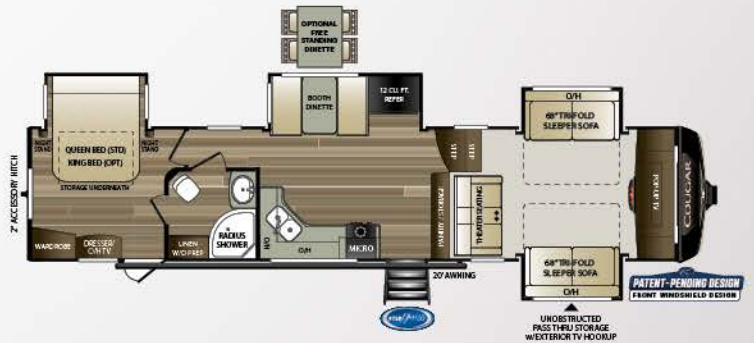
361RLW | Master suite, rear-living w/ windshield
Weight: 11269 LBS. | Length: 39' 4"



362RKS | Rear kitchen, three slides
Weight: 10855 LBS. | Length: 39' 4"



366RDS | Rearden, four slides
Weight: 11306 LBS. | Length: 39' 4"



367FLS | Front living room w/ windshield
Weight: 11100 LBS. | Length: 39' 4"



368MBI | Bonus room w/ loft
Weight: 11695 LBS. | Length: 39' 4"



369BHS | Bunkhouse, large outside kitchen
Weight: 11547 LBS. | Length: 39' 4"

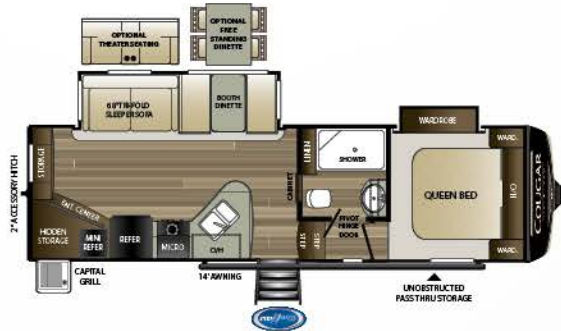


more product detail at
www.keystonerv.com/Cougar-Half-Ton

Cougar | HALF-TON FIFTH WHEELS

- EXCLUSIVE 90° plus MaxTurn Technology™ frame and hitch design for unparalleled maneuverability
- EXCLUSIVE Hitch Vision™ for faster and easier hook-up
- NEW iN-Command® Generation 3 w/ Global Connect control system gives owners total control over power, slide rooms, awnings, HVAC and more, from a convenient master control panel as well as an enabled smartphone application
- Climate Guard Protection Package: Zero to 110 degree rated, larger heating and cooling units, with in-floor heat ducting, 12V heat pads, racetrack A/C ducting, and increased insulation
- Ultra-stable and secure MORryde® Step Above™ steps
- Best-in-class holding tank capacities
- Best-in-class unobstruction exterior pass-through storage and oversized baggage doors
- EXCLUSIVE Road Armor™ suspension equalizes axle load to damping shock and vibration
- Road Armor™ pin box - rubberized torsion compound absorbs motion and vibration caused by road shock
- Upgraded exterior Capital Grill BBQ (outside kitchen models)
- Standard power stabilizer jacks or optional ground control 3.0 Auto Leveling System
- Interior and exterior LED lights
- 35,000 BTU furnace and 15,000 BTU air conditioner
- 50" 4K living room television (most models)
- Self-adjusting brakes, reverse taillights and backup camera prep
- 2" accessory hitch receiver with 300 lb. capacity
- Walkable roof with rear-wall ladder for easy maintenance
- KeyTV™: A simplified multisource signal controller that distributes satellite, cable, and over-the-air feeds via a single coax cable to every television
- NEW modern interior styling with pillow-top seating, fold-flat sofa, and dimmable lighting
- 30" x 50" residential-sized shower w/seat (N/A 32BHS)
- Furrion® range and 22" oven with glass cooktop cover and Piezo ignition

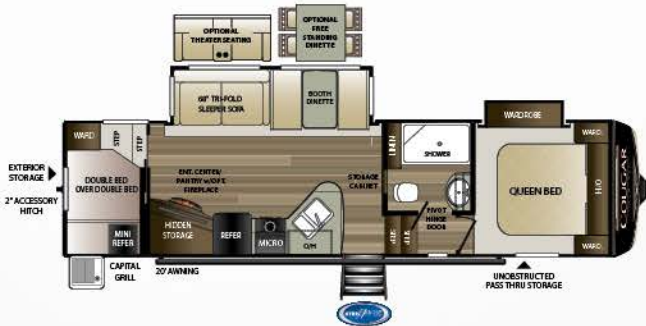




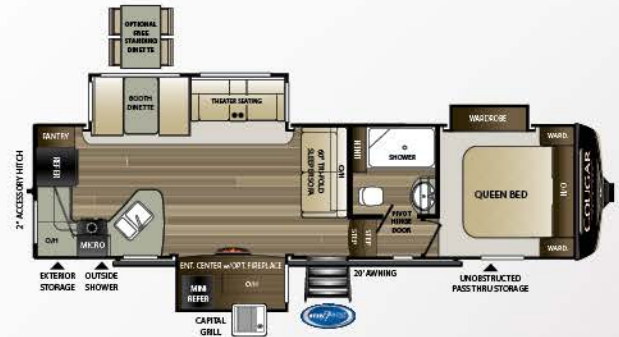
25RES | Rear entertainment, outside kitchen
Weight: 7582 LBS. | Length: 28'10"



27SGS | Rear living room w/ mid-entry
Weight: 8046 LBS. | Length: 31'4"



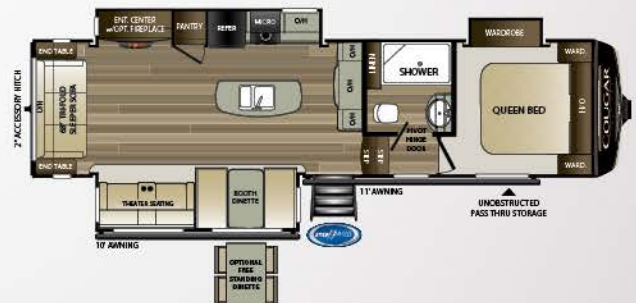
29RDB | Rear, private double bunkhouse
Weight: 8325 LBS. | Length: 32'10"



29RKS | Rear kitchen, open concept w/ outside kitchen
Weight: 8801 LBS. | Length: 32'10"



29RES | Rear entertainment, three slides
Weight: 8780 LBS. | Length: 32'10"



30RLS | Rear living room, gourmet kitchen
Weight: 9023 LBS. | Length: 33'6"



32BHS | 1 1/2 bath bunkhouse
Weight: 9336 LBS. | Length: 35'9"



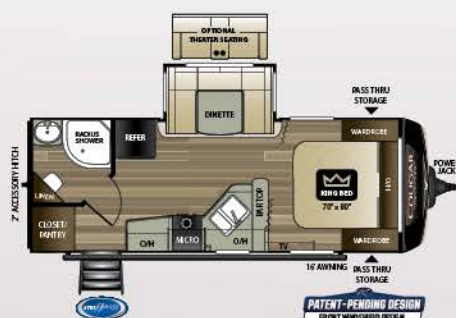
32DBH | Double bunkhouse w/ extra storage
Weight: 9311 LBS. | Length: 35'5"



more product detail at
www.keystonerv.com/Cougar-Half-Ton

Cougar | HALF-TON TRAVEL TRAILERS

- NEW iN-Command™ Generation 3 with Global Connect gives owners total control over power, slides, awnings, HVAC and more
- Climate Guard protection package – larger heating and cooling units, residential in-floor heat ducting, and increased insulation. Zero-degree rated
- Ultra-stable and secure MORryde® Step Above™ steps
- Upgraded exterior Capital Grill BBQ (outside kitchen models)
- Interior and exterior LED lights
- 35,000 BTU furnace and 15,000 BTU air conditioner
- 50" living room television on most models
- 70" x 80" standard king bed
- Arched rafters with 84" ceiling height
- 2" accessory hitch receiver
- Exceptionally durable and waterproof patent-pending automotive windshield design (select models)
- Self-adjusting brakes, reverse taillights and backup camera prep
- Power stabilizer jacks or optional automatic leveling system (most models)
- Walkable roof with rear-wall ladder for easy maintenance
- KeyTV™ – A simplified multisource signal controller that distributes satellite, cable, and over-the-air feeds via a single coax cable to every television
- NEW modern interior styling with pillow-top seating, fold-flat sofa, and dimmable lighting
- Furrion® range and 22" oven with glass cooktop cover
- Foot-flush porcelain toilet
- Best-in-class holding tank capacities



22RBS | Short, rear bath w/ slide
 Weight: 5607 LBS. | Length: 25' 11"



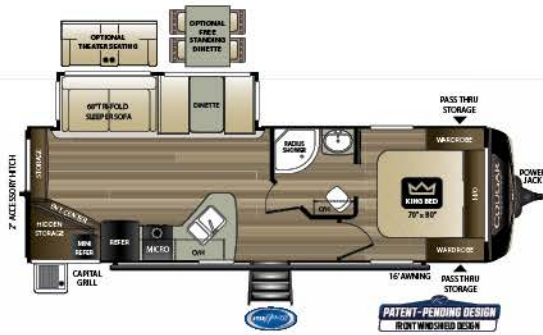
26RBS | Rear bath, slide and outside kitchen
 Weight: 6604 LBS. | Length: 29' 11"



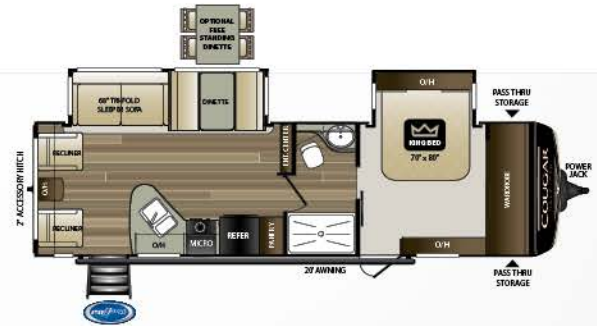
26RKS | Rear kitchen, outside kitchen
 Weight: 6626 LBS. | Length: 30'



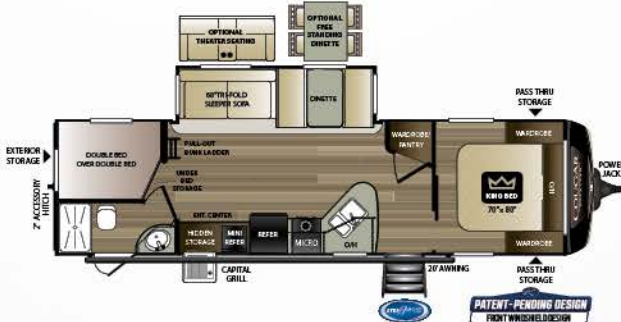
27SAB | Rear living room, side-aisle bath
 Weight: 6679 LBS. | Length: 31' 5"



27RES | Rear entertainment with outside kitchen
Weight: 6544 LBS. | Length: 30' 11"



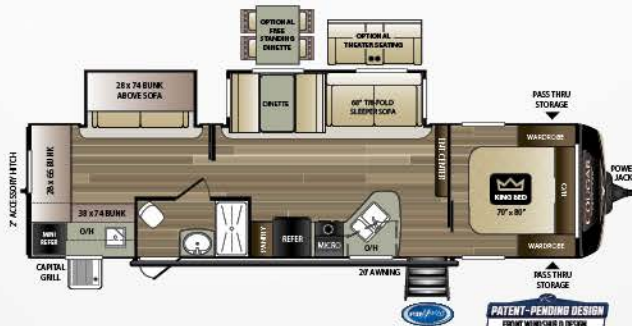
29RLD | Rear living room, bed slide w/ large front closet
Weight: 7446 LBS. | Length: 33' 5"



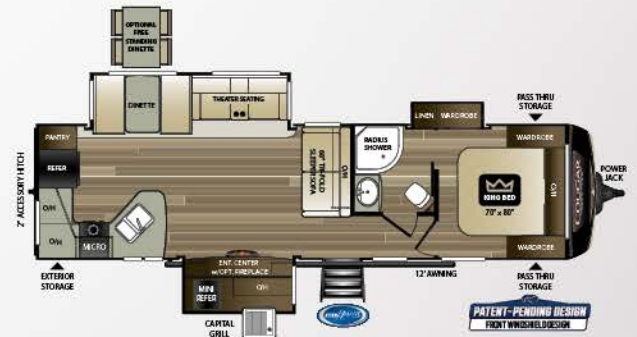
29BHS | Double bunkhouse, outside kitchen
Weight: 7008 LBS. | Length: 34' 1"



32RLI | Rear living room, three slides w/ bedroom slide
Weight: 8416 LBS. | Length: 35' 11"



32RDB | Huge rear bunk room, two slides
Weight: 7795 LBS. | Length: 36' 4"



33MLS | Rear kitchen, outside kitchen
Weight: 8088 LBS. | Length: 35' 3"



33SAB | Rear entertainment, double refrigerator
Weight: 8847 LBS. | Length: 36' 11"



34TSB | Three-slide bunkhouse w/ outside kitchen
Weight: 8563 LBS. | Length: 37' 5"

MID-PROFILE FIFTH WHEELS

MODEL	WEIGHT	CARRYING CAPACITY	HITCH WEIGHT	FRESH WATER	WASTE WATER	GRAY WATER	LP6	LENGTH*	HEIGHT T-A/C	HEIGHT 2-A/C
315RLS	10562	1828	1995	81	38	76	60	35' 8"	12' 6"	13' 5"
338RLK	10681	1809	2095	81	38	76	60	36' 5"	12' 6"	13' 5"
361RLW	11269	2711	1980	81	38	76	60	39' 4"	12' 3"	13' 5"
362RKS	10855	3005	1880	81	38	76	60	39' 4"	12' 3"	13' 5"
366RDS	11306	2684	1990	81	38	76	60	39' 4"	12' 6"	13' 5"
367FLS	11100	2900	2455	81	38	76	60	39' 4"	12' 5"	13' 5"
368MBI	11695	2285	1980	81	38	76	60	39' 4"	12' 7"	13' 5"
369BHS	11547	2453	2065	81	38	76	60	39' 4"	12' 3"	13' 5"

HALF-TON FIFTH WHEELS

MODEL	WEIGHT	CARRYING CAPACITY	HITCH WEIGHT	FRESH WATER	WASTE WATER	GRAY WATER	LP6	LENGTH*	HEIGHT T-A/C	HEIGHT 2-A/C
25RES	7582	2418	1505	60	30	60	60	28' 10"	11' 8"	12' 8"
27SGS	8046	2244	1495	60	30	60	60	31' 4"	11' 7"	12' 8"
29RDB	8325	1975	1520	60	30	60	60	32' 10"	11' 7"	12' 8"
29RKS	8801	1599	1605	60	30	60	60	32' 10"	11' 7"	12' 8"
29RES	8780	1520	1555	60	30	60	60	32' 10"	11' 7"	12' 8"
30RLS	9023	1977	1545	60	30	60	60	33' 6"	11' 9"	12' 10"
32BHS	9336	2164	1570	60	60	30	60	35' 9"	11' 9"	12' 10"
32DBH	9311	2189	1950	60	30	60	60	35' 5"	11' 9"	12' 10"

HALF-TON TRAVEL TRAILERS

MODEL	WEIGHT	CARRYING CAPACITY	HITCH	FRESH WATER	WASTE WATER	GRAY WATER	LP6	LENGTH*	HEIGHT
22RBS	5607	1593	630	60	30	30	60	25' 11"	11' 4"
26RBS	6604	2196	880	60	30	60	60	29' 11"	11' 4"
26RKS	6626	2174	810	60	30	60	60	30'	11' 4"
27SAB	6679	2121	975	60	30	60	60	31' 5"	11' 4"
27RES	6544	2256	835	60	30	60	60	30' 11"	11' 4"
29RLD	7446	2054	1085	60	30	60	60	33' 5"	11' 4"
29BHS	6975	1825	765	60	30	60	60	34' 1"	11' 4"
32RLI	8416	2084	1165	60	30	60	60	35' 11"	11' 4"
32RDB	7910	2590	1105	60	30	60	60	36' 4"	11' 4"
33MLS	7870	2630	1000	60	30	60	60	35' 3"	11' 4"
33SAB	8847	1653	1205	60	30	60	60	36' 11"	11' 4"
34TSB	8563	1937	1150	60	30	60	60	37' 5"	11' 4"

DISCLAIMER: Product information is as accurate as possible as of the date of publication of this brochure. All features, floor plans, and specifications in this brochure are subject to change without notice. Please also consult Keystone's web site at www.keystonerv.com for more current product information and specifications. Tow Vehicle Disclaimer. CAUTION: Owners of Keystone recreational vehicles are solely responsible for the selection and proper use of tow vehicles. All customers should consult with a motor vehicle manufacturer or their dealer concerning the purchase and use of suitable tow vehicles for Keystone products. Keystone disclaims any liability or damages suffered as a result of the selection, operation, use or misuse of a tow vehicle. KEYSTONE'S LIMITED WARRANTY DOES NOT COVER DAMAGE TO THE RECREATIONAL VEHICLE OR THE TOW VEHICLE AS A RESULT OF THE SELECTION, OPERATION, USE OR MISUSE OF THE TOW VEHICLE. *Length is defined as the distance from the centerline of hitch pin/coupler to rear bumper of trailer. Please review owner's manual prior to purchase for more information on service warranties, extended use, towing and maintenance. Owner's manuals can be found at keystonerv.com.

STANDARDS AND OPTIONS

Mid-Profile Fifth Wheel

CAMPING IN STYLE PACKAGE
Champagne laminated side walls w/5-side aluminum superstructure
3/8" walkable roof decking
Fiberglass front cap with Hitch Vision™ & LED lights
Full-size spare tire
Cougar vintage maple glazed hardwood cabinetry
12,000 BTU rapid-recovery 6-gallon gas/electric water heater
Aluminum wheels
Battery disconnect switch
LED interior and exterior lighting
MORryde® Solid Step® on main entry
Friction hinge entry door
COUGAR ANNIVERSARY PACKAGE
12 cu. ft. refrigerator
1.6 cu. ft. microwave upgrade
Washer/dryer prep
21" Furrion® range w/piezo ignition and glass stovetop cover
LG® solid surface counter top upgrade
Gourmet stainless steel under-mount sink with upgraded chef's faucet w/sprayer
2" Accessory hitch with 300 lb. capacity
Upgraded Road Armor™ pin box plus equalizer
COUGAR COMFORT PACKAGE
15,000 BTU ducted air conditioner
50 AMP service, pre-wired and braced for 2nd A/C
35K BTU ducted furnace
Dual 30 lb. LP tanks
1,000 CFM 4-Speed "Fantastic Fan" exhaust fan with rain sensor and wall-mounted controls
DELUXE ENTERTAINMENT/ TECHNOLOGY PACKAGE
50" LED HDTV in living area
32" LED HDTV in Bedroom
12V AM/FM/CD/DVD/MP3/Bluetooth player with HDMI ARC control
Worry-free, omni-directional digital TV antenna with booster
Exterior TV hookup with TV bracket
5500 BTU electric fireplace with thermostat control w/remote
Furrion backup/observation camera prep
Furrion® portable solar panel prep
12V USB charging center
CLIMATE GUARD PROTECTION PACKAGE
Astro-Foil insulated slide floors plus underbelly
Reflective foil-insulated front cap
Forced-air heated and enclosed underbelly
12V heat pads on holding tanks
Heated/enclosed dump valves
Heated/enclosed convenience center
SMART CAMPING
iN-Command® Pro Series Gen. 3 with Global Connect
Furrion 4G LTE and Wi-Fi prep
OPTIONS
70" X 80" king size bed (70" x 74" 367FLS)
13.5 BTU ducted bedroom A/C with thermostat
Free-standing dinette and chairs
Dual-pane frameless windows
Theater seats IPO tri-fold (369BHS only)
CSA construction

Half-Ton Fifth Wheel

CAMPING IN STYLE PACKAGE
Champagne laminated side walls w/5-side aluminum superstructure
3/8" walkable roof decking
Fiberglass front cap with Hitch Vision™ & LED lights
Full-size spare tire
Cougar vintage maple glazed hardwood cabinetry
12,000 BTU rapid-recovery 6-gallon gas/electric water heater
Aluminum wheels
Battery disconnect switch
LED interior and exterior lighting
MORryde® Solid Step® on main entry
Friction hinge entry door
HALF TON FW ANNIVERSARY PACKAGE
8 cu ft. refrigerator
0.9 cu. ft. microwave
21" Furrion® range w/piezo ignition and glass stovetop cover
Foil-wrap seamless galley and lavatory countertops
Gourmet stainless steel under-mount sink with upgraded chef's faucet w/sprayer
2" Accessory hitch with 300 lb. capacity
Upgraded Road Armor™ pin box plus equalizer
HALF TON FW COMFORT PACKAGE
15,000 BTU ducted A/C
50 AMP service, pre-wired and braced for 2nd A/C
Ducted bedroom A/C
35K BTU ducted furnace
Dual 30 lb. LP tanks
CLIMATE GUARD PROTECTION PACKAGE
Astro-Foil insulated slide floors plus underbelly
Reflective foil-insulated front cap
Forced-air heated and enclosed underbelly
12V heat pads on holding tanks
Heated/enclosed dump valves
Heated/enclosed convenience center
SMART CAMPING
iN-Command® Pro Series Gen. 3 with Global Connect
Furrion 4G LTE and Wi-Fi prep
OPTIONS
Electric rear stabilizing jacks
Electric 4-point leveling system
Dual-pane frameless windows
13.5 BTU ducted bedroom A/C with thermostat
Free-standing dinette and chairs
5500 BTU electric fireplace with thermostat control and remote
Theater seat IPO tri-fold (25RES, 29RDB, 32BHS, 32DBH Only)
Theater seat IPO recliners (29RES Only)
CSA construction

Half-Ton Travel Trailers

CAMPING IN STYLE PACKAGE
Champagne laminated side walls w/5-side aluminum superstructure
3/8" walkable roof decking
Fiberglass front cap with Hitch Vision™ & LED lights
Full-size spare tire
Cougar vintage maple glazed hardwood cabinetry
12,000 BTU rapid-recovery 6-gallon gas/electric water heater
Aluminum wheels
Battery disconnect switch
LED interior and exterior lighting
MORryde® Solid Step® on main entry
Friction hinge entry door
HALF TON TT ANNIVERSARY PACKAGE
8 cu ft. refrigerator
0.9 cu. ft. microwave
21" Furrion® range w/piezo ignition and glass stovetop cover
Foil-wrap seamless galley and lavatory countertops
Gourmet stainless steel under-mount sink with upgraded chef's faucet w/sprayer
2" Accessory hitch with 300 lb. capacity
HALF TON TT COMFORT PACKAGE
15,000 BTU ducted A/C
35K BTU ducted furnace
Dual 30 lb. LP tanks
CLIMATE GUARD PROTECTION PACKAGE
Astro-Foil insulated slide floors plus underbelly
Reflective foil-insulated front cap
Forced-air heated and enclosed underbelly
12V heat pads on holding tanks
Heated/enclosed dump valves
SMART CAMPING
iN-Command® Pro Series Gen. 3 with Global Connect
Furrion 4G LTE and Wi-Fi prep
OPTIONS
Electric rear stabilizing jacks (Mandatory 22RBS)
Automatic leveling system (N/A 22RBS)
Dual-pane frameless windows
50 Amp service/wired and braced for 2nd A/C (N/A 22RBS)
(Mandatory: 26RBS, 26RKS, 32RLI, 33SAB, 33MLS, 34TSB)
(Optional: 27SAB, 27RES, 29RLD, 29BHS, 32RDB)
13.5 BTU A/C (bedroom, ducted) 50 Amp required
Fireplace (26RBS, 26RKS, 32RLI, 32RLI, 33SAB, 33MLS, 34TSB)
Free-standing dinette and chairs
Theater seat IPO tri-fold (26RBS, 26RKS, 27RES, 29BHS, 32RDB, 34TSB, Only)
Theater seat IPO recliners (33SAB Only)
Theater seat IPO dinette (22RBS Only)
CSA construction

BUILT FOR THE LONG HAUL



PRINT 1.2019



**Keystone RV
Company**