

FREE SHIPPING ON YOUR ORDER | USE CODE: FREESHIP Exclusions Apply

UP TO 40% OFF EVERYTHING

UP TO 40% OFF  
OUTDOOR FURNITURE

25% OFF SOFAS, CHAIRS & MORE  
USE CODE: RELAX [Exclusions Apply](#)

SHOP OUR DEEPEST DEALS

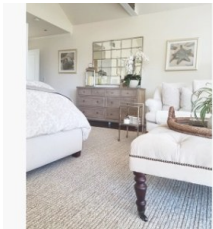
Home > Furniture > Upholstery Crafted In America > Beds & Headboards > Raleigh Upholstered Wingback Bed



[VIEW LARGER](#)



SEE HOW OTHERS STYLED THIS ITEM



[ADD YOUR PHOTOS](#)

RALEIGH UPHOLSTERED  
WINGBACK BED

Contract Grade

[Clear Selection](#)

SELECT SIZE

Full Bed

Queen Bed

King Bed

California King Bed

SELECT NAILHEAD

Bronze Nailhead

Pewter Nailhead

Without Nailhead

SELECT FABRIC AND COLOR

FABRIC

COLOR

5-8 Weeks (Made-to-Order)

Twill, White

Twill, Cream

Twill, Parchment

Twill, Metal Gray

Twill, Sierra Red

Twill, Cadet Navy

Brushed Crossweave, Natural

Brushed Crossweave, Charcoal

Brushed

Performance

Performance

Performance

8+ Weeks (Made-to-Order)

Save Like 3 EMAIL PRINT

LOOKING FOR FREE  
FABRIC SWATCHES?

REQUEST SWATCHES

Brushed Crossweave, Light Gray	Performance Everydayvelvet™, Navy	Raw Slub Cotton, Oatmeal	Performance Chateau Basketweave, Blue
Sunbrella® Performance Slub Tweed, Ash	Sunbrella® Performance Slub Tweed, Oatmeal	Sunbrella Performance Chenille, Cloud	Performance Brushed Basketweave, Slate

\$1,399-\$2,599  
Unlimited Flat Rate Delivery

QTY  
Request Free Swatches

ADD TO CART

ADD TO REGISTRY



Earn \$25 in rewards\* for every \$250 spent with your Pottery Barn Credit Card.  
[Learn More](#)

OVERVIEW

Patterned after the classic Raleigh chair, our bed has a high back and sheltering sides that create a cozy spot for lounging.

- Crafted with a kiln-dried hardwood frame.
- Headboard, footrail and side rails are thickly padded and tightly upholstered with your choice of fabric.
- Headboard's nailhead trim lends a neat, finished look to the bed.
- Nailheads come in choice of bronze or pewter finish.
- Exposed block feet are hand-finished in Espresso.
- Hook and slot system used for side rail attachment to headboard and footboard.
- Cross-slat (5) support system.
- Box spring is required.
- Headboard is also available for purchase separately.
- Adjustable levelers add stability on uneven floors.
- Constructed domestically with imported materials.

DIMENSIONS & CARE

SHIPPING & RETURNS

ALSO IN THIS COLLECTION



Raleigh Square Upholstered Tall Headboard  
\$587 – \$1,349



Raleigh Upholstered Square Low Bed  
\$899 – \$2,099



Raleigh Upholstered Tall Curved Headboard Side Storage Bed  
Sale \$1,899 – \$4,295



Raleigh Square Low Storage Bed  
\$2,545 – \$4,295

FEEDBACK

YOU MAY ALSO LIKE



Raleigh Upholstered Curved Tall Bed  
\$999 – \$2,199



Chesterfield Tufted Upholstered Bed  
\$1,999 – \$2,499  
Sale \$999.99 – \$2,499



Calistoga Bed  
~~\$1,399 – \$1,599~~  
Special \$1,119 – \$1,279



Toulouse Wood Bed  
~~\$1,599 – \$1,999~~  
Special \$1,519 – \$1,804

SEE MORE RECOMMENDATIONS

RECENTLY VIEWED



Raleigh Square Low Storage Bed  
\$2,545 – \$4,295



Raleigh Square Tall Storage Bed  
\$1,699 – \$4,395



Raleigh Upholstered Tall Curved Headboard Side Storage Bed  
\$1,899 – \$4,295



Raleigh Upholstered Low Curved Headboard Side Storage Bed  
\$2,545 – \$4,195

SEE MORE RECOMMENDATIONS



RELATED SEARCHES

- Storage Upholstered Bed
- White Upholstered Bed
- Upholstered High Beds
- Tufted Bed
- Espresso Wood Bed
- Linen Headboard Bed

RELATED PRODUCTS



**Fillmore Curved Upholstered Tall Bed**  
The slightly angled silhouette of this bed's headboard, ...  
[VIEW MORE](#)



**Kira Channel Tufted Upholstered Bed**  
An updated take on Hollywood glamour, our Kira ...  
[VIEW MORE](#)



**Lorraine Tufted Tall Upholstered Headboard**  
Deeply cushioned and invitingly plush, our headboard evokes ...  
[VIEW MORE](#)

SHOP OUR FAMILY OF BRANDS:

POTTERY BARN

PB/APT.

pottery barn kids

PBteen

CUSTOMER SERVICE

- Customer Service
- Track Your Order
- Easy Returns
- Shipping Information
- Help Topics
- Pay Bill Online
- Email Preferences
- International Orders
- \*Promotion Details
- Contact Us

CATALOG

- Catalog Request
- eCatalogs
- Address Changes

[+] Give Us Feedback

STORES

- Locate a Store
- Store Events
- Free Design Services

RESOURCES

- What's New
- Gift Cards
- Site Map
- New Mover Program
- Military Discount

B2B PROGRAMS

- Overview
- Trade
- Contract

CREDIT CARD



- Pottery Barn Credit Card
- Apply Now
- Manage Account

OUR COMPANY

- About Us
- Our Commitments
- Sustainability Glossary
- Careers
- Press
- Legal Statement
- Privacy Policy
- Accessibility
- Terms & Conditions

Get 15% off

enter your email address

SUBMIT



\*Some exclusions apply. [See details](#)

\*\*The Pottery Barn Credit Card Rewards Program is provided by Pottery Barn, which is solely responsible for the program operation. Pottery Barn may change the terms of the program at any time. Transactions of \$750 or more must choose between earning rewards or promotional financing. For full Rewards Terms and Conditions, please [see details](#).



© 2019 Williams-Sonoma, Inc. All Rights Reserved