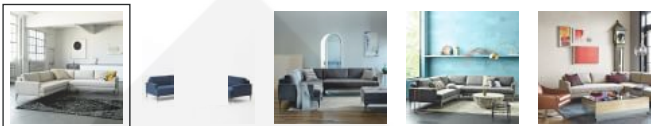


west elm

Home > Furniture > Sofa + Sectional Collections > Assembled In The USA > Andes 3-Piece Sectional



[View Larger](#) Roll Over Image to Zoom



Email Print

@westelm

Be the first to show us how you've styled this item!

[+ Add your own photos](#)

Like 3 Tweet Save 431

Andes 3-Piece Sectional

HAVE A QUESTION?

[See 5 Answers](#)

[New Colors](#)

[Clear Selection](#)

SELECT CONFIGURATION

- Left Arm 2.5 Seater Sofa + Corner + Right Arm 2 Seater Sofa
- Left Arm 2 Seater Sofa + Corner + Right Arm 2.5 Seater Sofa

SELECT FABRIC AND COLOR

Fabric

Color

[View Fabrics in 3D](#)

2-4 Weeks

- Performance Velvet, Ink Blue
- Worn Velvet, Metal
- Twill, Stone

5-8 Weeks (Made-to-Order)

- Basket Slub, Dark Horseradish
- Distressed Velvet, Rust
- Twill, Regal Blue
- Twill, Teal
- Distressed Velvet, Olive
- Chenille Tweed, Feather Gray
- Chenille Tweed, Frost Gray
- Chenille Tweed, Nightshade
-
-

SELECT LEG STYLE

- Blackened Brass
- Dark Pewter

SELECT SECTIONAL DEPTH

Overall sectional depth (for seat depth, see Details + Dimensions)

- Standard (40")
- Extra Deep (46")

~~\$3,447 - \$4,697~~ **Special \$2,758 - \$3,758**

Flat Rate Delivery

QTY

[Request Free Swatches](#)

Add To Cart

[Add To Registry](#)

Earn \$25 in rewards for every \$250 spent on your west elm credit card.

[Learn More >](#)

OVERVIEW

With its modern form, extra-deep seat and crisp tailoring, our spacious Andes Sectional has serious presence (it fits up to eight) but feels airy and light thanks to the thin frame and cast metal legs.

- This contract-grade item is manufactured to meet the demands of commercial use in addition to residential. [See more.](#)
- Choose your sofa depth: Standard (40") or Extra Deep (46").
- Cast metal legs.
- Solid eucalyptus and engineered hardwood frame with reinforced joinery.
- Tied-spring cushion support.
- Seat cushions have fiber-wrapped, high-resiliency polyurethane foam cores.
- Back cushions are foam and fiber filled.
- Loose cushions with zip-off covers; sofa seat cushions are not reversible.
- Made to order in the USA; stocked items are imported.

DETAILS + DIMENSIONS

SHIPPING + RETURNS

QUESTIONS + ANSWERS

Powered by TurnTo

Have a question about this item? Ask a west elm associate.

Start typing your question and we'll check if it was already asked and answered. [Learn More](#)

Browse 5 questions and 5 answers

Sort by Most Common

Q: Do the sectional pieces attach or just push together?

asked by west elm shopper

A: The pieces attach directly to one another via brackets, which are included at the base of each piece and not visible once connected.

answered by west elm associate on Apr 4, 2018

I FOUND THIS HELPFUL (11)

Q: Hi, I recently bought this sofa in worn velvet (metal), and I was wondering if I am able to have the material professionally cleaned. I have also noticed that the cushions are able to be unzipped, is this a material that is able to be taken to the dry cleaners?

asked by Ana P

A: For any staining that a damp cloth cannot remove, professional cleaning is recommended. This can include dry cleaning, and the covers are removable as you note.

answered by a west elm associate on Jun 1, 2018

I FOUND THIS HELPFUL (8)

Q: what are the details of the construction?

asked by Mark P

A: The frame is made of kiln-dried solid eucalyptus wood and plywood, with joints that are stapled, glued and blocked for extra strength. The cushions are filled with high-density foam and fiber wrapped for optimal support.

answered by a west elm associate on Apr 18, 2018

I FOUND THIS HELPFUL (6)

Q: What are the cushions filled with?

asked by Bekah

A: The cushions are filled with high-density polyurethane foam for comfortable support.

answered by a west elm associate on Apr 9, 2018

I FOUND THIS HELPFUL (6)

Show 1 More Question For This Product

PEOPLE ALSO BROWSED

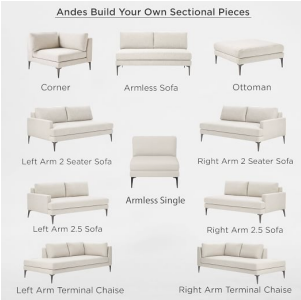
[See More Personalized Picks](#)



Andes L-Shaped Sectional
~~\$3,347~~ — ~~\$4,797~~
Special \$2,678 — \$3,838



Andes Terminal Chaise Sectional
~~\$2,548~~ — ~~\$3,648~~
Special \$2,039 — \$2,919



Build Your Own - Andes Sectional Pieces
~~\$599~~ — ~~\$1,949~~
Sale \$299.99 — \$1,560



Haven 2-Piece Terminal Chaise Sectional
~~\$2,798~~ — ~~\$3,398~~
Special \$2,239 — \$2,719

PEOPLE ALSO BOUGHT

[See More Personalized Picks](#)



Watercolor Solid Rug
~~\$79 — \$2,199~~
Special \$59 — \$1,649



Andes Ottoman
~~\$599 — \$999~~
Sale \$299.99 — \$800



Leesa Hybrid Mattress (Formerly Sapira)
~~\$1,095 — \$1,895~~
Special \$796 — \$1,436

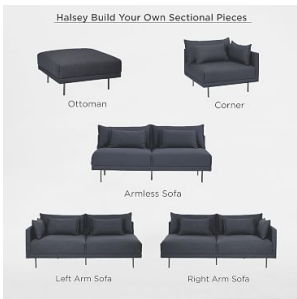


Sedgwick Leather Recliner
~~\$1,299 — \$1,399~~
Special \$1,040 — \$1,120

RELATED SEARCHES

- [3 piece sectional furniture](#)
- [henry 3 piece sectional](#)
- [leather chaise sectional](#)
- [3 piece chaise sectional sofa](#)
- [eddy collection](#)
- [queen sleeper sofa sectional](#)
- [mid century collection](#)

RELATED PRODUCTS



Build Your Own - Halsey Sectional Pieces
The squared silhouette of our Halsey Sectional matches ...
[View More](#)



Crosby Mid-Century 2-Piece Chaise Sectional
Retro details like slim arms, hand-tufted cushions, lofty ...
[View More](#)



Halsey 3-Piece Sectional
The squared silhouette of our Halsey Sectional matches ...
[View More](#)