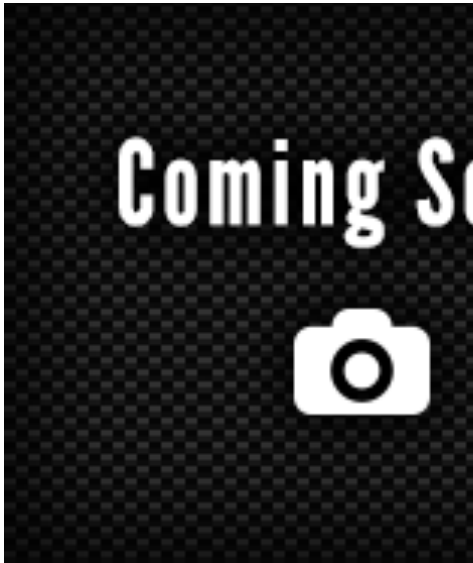


Saved Vehicles

You Are Here: Home (https://www.mbcollerville.com/) > New (/new-vehicles/sprinter/#action=im_ajax_call&perform=get_results&year%5B%5D=2019&page=1&show_all_filters=false) > **New 2019 Mercedes-Benz Sprinter** (https://www.mbcollerville.com/inventory/new-2019-mercedes-benz-sprinter-2500-cargo-van-rear-wheel-drive-3d-cargo-van-wd3pf1cd7kp047709)

New 2019 Mercedes-Benz Sprinter 2500 Cargo Van 3D Cargo Van Rear Wheel Drive



VIN #: **WD3PF1CD7KP047709** | STOCK #: **19371**

Please Call for Price

Only 4 2500 Cargo Van models left in stock!
Pricing information for 03/07/2019

1 person recently viewed this vehicle*

Share This:

Save

(/#facebook)

(/#google_plus)

(/#twitter)

(/#email)

Shopping Tools:

[PAYMENT CALCULATOR](#)

[PRINT](#)

[SCHEDULE TEST DRIVE](#)

[CHECK AVAILABILITY](#)

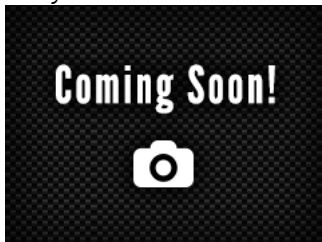
[SHARE VEHICLE \(\)](#)

Vehicle Details:

Body: 3D Cargo Van
Exterior: Arctic White
Interior: Fabric Black

Engine: 3.0L V6 Turbodiesel
Trans: 7G-TRONIC 7-Speed Automatic

Other Vehicles You May Like



(<https://www.mbcollerville.com/inventory/new-2019-mercedes-benz-sprinter-2500-cargo-van-rear-wheel-drive-3d-cargo-van-wd3pf0cd9kp054770>)

(<https://www.mbcollerville.com/inventory/new-2019-mercedes-benz-sprinter-2500-cargo-van-rear-wheel-drive-3d-cargo-van-wd3pf1cd9kp029731>)

(<https://www.mbcollerville.com/inventory/new-2018-mercedes-benz-sprinter-2500-passenger-van-rear-wheel-drive-passenger-van-8brpe7cd8je154420>)

New 2019 Mercedes-Benz Sprinter 2500 Cargo Van 3D Cargo Van Rear Wheel Drive
\$44,563

New 2019 Mercedes-Benz Sprinter 2500 Cargo Van 3D Cargo Van Rear Wheel Drive
\$46,361

New 2018 Mercedes-Benz Sprinter 2500 Passenger Van Passenger Van Rear Wheel Drive
\$55,170

(<https://www.mbcollerville.com/inventory/new-2019-mercedes-benz-sprinter-2500-cargo-van-rear-wheel-drive-3d-cargo-van-wd3pf0cd9kp054770>)

(<https://www.mbcollerville.com/inventory/new-2019-mercedes-benz-sprinter-2500-cargo-van-rear-wheel-drive-3d-cargo-van-wd3pf1cd9kp029731>)

(<https://www.mbcollerville.com/inventory/new-2018-mercedes-benz-sprinter-2500-passenger-van-rear-wheel-drive-passenger-van-8brpe7cd8je154420>)

Offers (/dealer inspire-inventory/dispatch vin=WD3PF1CI

Interior

Exterior

Entertainment

Mechanical

Safety

Premium Optic

Details

Description

- Production Dusseldorf
- Rear Doors 270 Degree Opening
- Cargo Lashing Rails-Upper
- Sliding Door - Two Stage Opening
- Comfort Passenger's Seat
- TIRE BRAND - MICHELIN
- Cargo Straps - D Rings
- Cargo Lashing Rails-Waistline
- Assist Handle - Right Rear Door
- Lumbar support, driver seat
- Comfort Driver's Seat
- Cruise Control
- Rear Door Step - Bumper, Gray
- HALF HEIGHT LOAD COMPARTMENT TRIM
- Assist Handle-Left Rear Door
- Assist Handle w/Partition
- Lumbar support, passenger seat
- Specially Requested Tires

Packages

Why Mercedes-Benz of Collierville

Mercedes-Benz of Collierville is part of a prestigious tradition of excellence and expertise. Ours is the third Mercedes-Benz dealership established by the Higginbotham family since 1994. In that time these dealerships have been honored with a number of awards and accolades for customer service, community involvement, and brand leadership. Mercedes-Benz of Collierville was established in 2014 and combines a spirit of innovation with best practices learned over the previous 20 years.

Disclaimer:

New vehicle pricing includes all offers. Tax, Title and Tags not included in vehicle prices shown and must be paid by the purchaser. While great effort is made to ensure the accuracy of the information on this site, errors do occur so please verify information. It is the customer's sole responsibility to verify the existence of any equipment listed. This is easily done by calling us at 901-316-3535 or by visiting us at the dealership.

With approved credit. Terms may vary. Monthly payments are only estimates derived from the vehicle price with a 72 month term, 4.9% interest and 20% downpayment.

*Number of views in last 30 days

† Based on 2019 EPA mileage ratings. Use for comparison purposes only. Your actual mileage will vary depending on how you drive and maintain your vehicle.

Inventory

Financing

Service & Parts

About Us

Connect With Us

Get Approved

(<https://www.mbfs.com/mbfs/en/apply/applyHome.do?RequestFrom=CREDITLEAD&dlCode=74121&dlEdit=N&vType=N&source=XXXX>)

Value Your Trade

(<https://www.mbcollerville.com/your-trade/>)

Finance Center

(<https://www.mbcollerville.com/finance/>)

Payment

Calculator

(<https://www.mbcollerville.com/payment-calculator/>)

Schedule Service

(<https://www.mbcollerville.com/service/>)

Service Specials

(<https://www.mbcollerville.com/service-specials/>)

Order Parts

(<https://www.mbcollerville.com/order-parts/>)

Parts Specials

(<https://www.mbcollerville.com/parts-specials/>)

Our Reviews

(<https://www.mbcollerville.com/about-testimonials/>)

Our Staff

(<https://www.mbcollerville.com/about-us/staff/>)

Hours & Directions

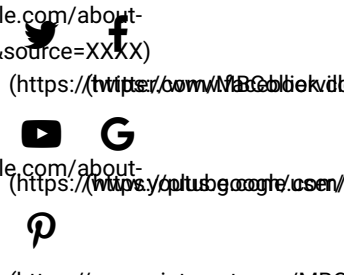
(<https://www.mbcollerville.com/contact-us/>)

About Us

(<https://www.mbcollerville.com/about-us/>)

Careers

(<https://www.mbcollerville.com/careers/>)



New Vehicles

(<https://www.mbcollerville.com/new-vehicles/>)

Pre-Owned

Vehicles

(<https://www.mbcollerville.com/used-vehicles/>)

Certified Pre-

Owned

(<https://www.mbcollerville.com/used-vehicles/certified-pre-owned-vehicles/>)

New Specials

(<https://www.mbcollerville.com/new-vehicles/new-vehicle-specials/>)

Pre-Owned

Specials

(<https://www.mbcollerville.com/used-vehicles/pre-owned-vehicle-specials/>)

Privacy Policy

(<https://www.mbcollerville.com/service/privacy-policy/>)

Contact Us

(<https://www.mbcollerville.com/contact-us/>)

Sitemap (/sitemap/)

Sitemap XML

(/sitemap_index.xml)

Copyright © 2019 Mercedes-Benz of Collierville

Advanced Automotive Dealer
Websites by Dealer Inspire
(<http://www.dealerinspire.com>)

Text Us: (901) 466-8817