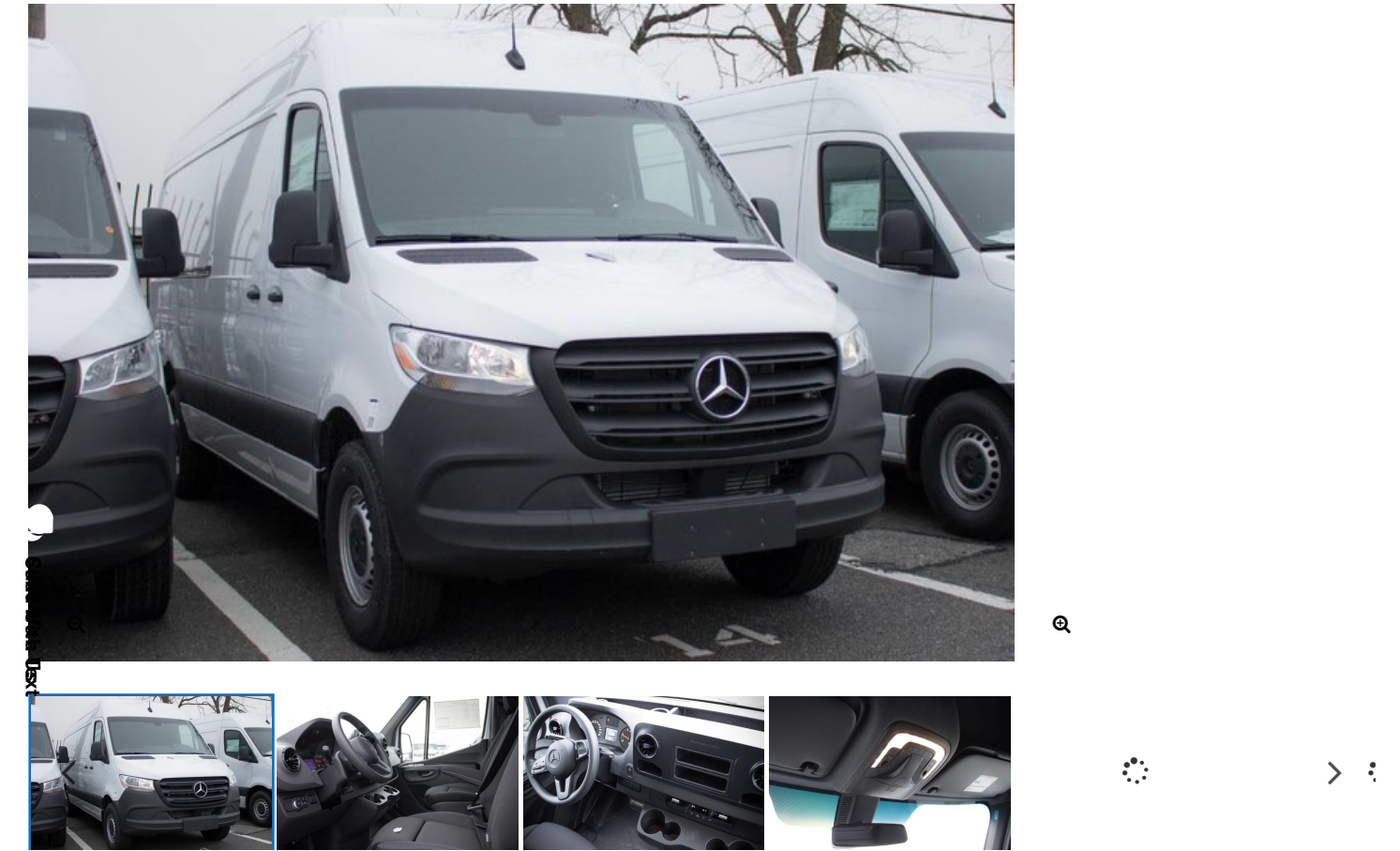


You Are Here: Home (<https://www.mbofmassapequa.com/>) > New (/new-vehicles/sprinter-metris-vans/#action=im_ajax_call&perform=get_results&year%5B%5D=2019&page=1) > **New 2019 Mercedes-Benz Sprinter**
(<https://www.mbofmassapequa.com/inventory/new-2019-mercedes-benz-sprinter-2500-cargo-van-rear-wheel-drive-cargo-van-wd3pf1cd3kp041339>)
New 2019 Mercedes-Benz Sprinter 2500 Cargo Van Rear Wheel Drive CARGO VAN



STOCK	KP041339
VIN	WD3PF1CD3KP041339
MSRP	\$48,428

Pricing information for 03/06/2019

PREMIUM OPTIONS	View All >
ADDITIONAL EQUIPMENT \$225 COMFORT PASSENGER SEAT	
ADDITIONAL EQUIPMENT \$64 FRONT PASSENGER LUMBAR SUPPORT	
ADDITIONAL EQUIPMENT \$64 DRIVER SEAT LUMBAR SUPPORT	

<https://www.mbofmassapequa.com/inventory/new-2019-mercedes-benz-sprinter-2500-cargo-van-rear-wheel-drive-cargo-van-wd3pf1cd3kp041339> 2/4

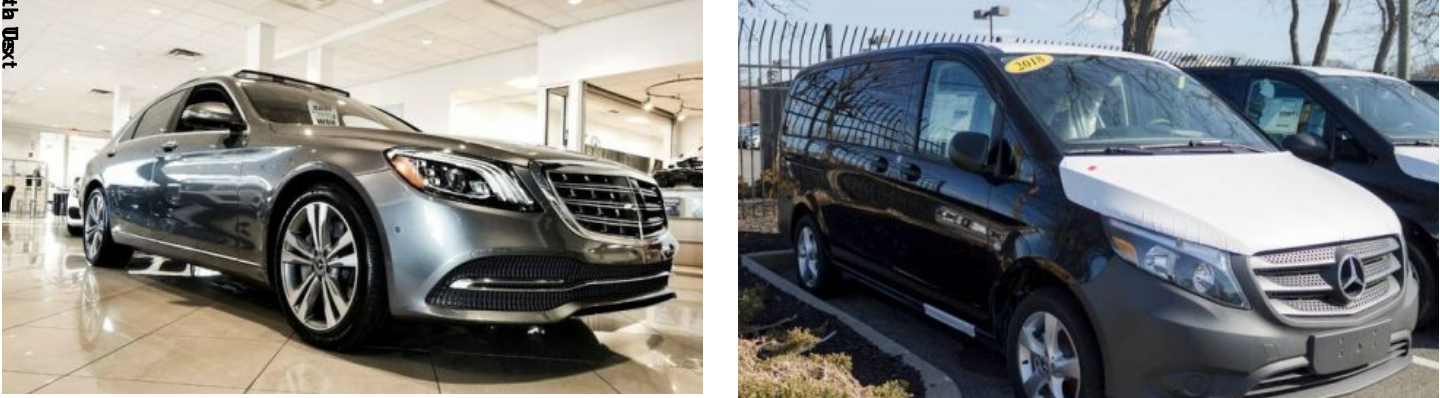
Production Dusseldorf
Cargo Straps - D Rings
Rear Door Step - Bumper, Gray
Rear Doors 270 Degree Opening
Cargo Lashing Rails-Waistline
HALF HEIGHT LOAD COMPARTMENT TRIM
Cargo Lashing Rails-Upper
Assist Handle - Right Rear Door
Assist Handle-Left Rear Door
Assist Handle w/Partition
Sliding Door - Two Stage Opening
Lumbar support, driver seat
Lumbar support, passenger seat
Comfort Passenger's Seat
Comfort Driver's Seat
Specially Requested Tires
TIRE BRAND - MICHELIN
Cruise Control

 Packages

▼

Shad With Text

Other Vehicles You May Like



Disclaimer:

New vehicle pricing includes all offers. Tax, Title and Tags not included in vehicle prices shown and must be paid by the purchaser. While great effort is made to ensure the accuracy of the information on this site, errors do occur so please verify information with a customer service rep. This is easily done by calling us at (888) 476-1929 or by visiting us at the dealership.

****With approved credit. Terms may vary. Monthly payments are only estimates derived from the vehicle price with a 72 month term, 4.9% interest and 20% downpayment.**

Bluetooth® is a registered mark Bluetooth® SIG, Inc.

***Number of views in last 30 days**

† Based on 2019 EPA mileage ratings. Use for comparison purposes only. Your actual mileage will vary depending on how you drive and maintain your vehicle.



Mercedes-Benz of Massapequa

(<https://www.mbofmassapequa.com>)



(<https://twitter.com/mbmassapequa>) (<https://www.facebook.com/mbmassapequa>) (<https://www.youtube.com/channel/UCp4K6p0n9Ua>) (<https://plus.google.com/114582222222222222222>)

Contact Us (<https://www.mbofmassapequa.com/contact-us/>) Sitemap (/sitemap/) Privacy Policy (<https://www.mbofmassapequa.com/privacy-policy/>)
Accessibility Statement (<https://www.mbofmassapequa.com/web-accessibility-statement/>)
Copyright © 2019 Mercedes-Benz of Massapequa
Advanced Automotive Dealer Websites by Dealer Inspire (<http://www.dealerinspire.com>)

Shad With Us!