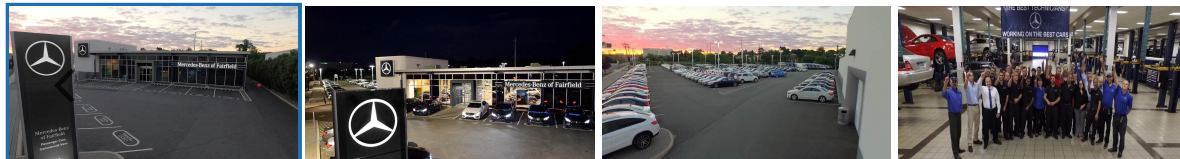


You Are Here: [Home \(https://www.mercedesbenzoffairfield.com/\)](https://www.mercedesbenzoffairfield.com/) > [New \(/new-vehicles/sprinter/#action=im_ajax_call&perform=get_results&year%5B%5D=2019&page=1\)](#) > [New 2019 Mercedes-Benz Sprinter \(https://www.mercedesbenzoffairfield.com/inventory/new-2019-mercedes-benz-sprinter-3500-cargo-van-rear-wheel-drive-cargo-van-wd3pf1cd0kp046742\)](https://www.mercedesbenzoffairfield.com/inventory/new-2019-mercedes-benz-sprinter-3500-cargo-van-rear-wheel-drive-cargo-van-wd3pf1cd0kp046742)

New 2019 Mercedes-Benz Sprinter 3500 Cargo Van Rear Wheel Drive CARGO VAN



STOCK
VIN

KP046742
WD3PF1CD0KP046742

MSRP

\$50,978

[Chat with us](#)

Call Us (877) 557-5298 (tel:8775575298)

Pricing information for 03/12/2019

Calculating Payments...

PREMIUM OPTIONS

[View All >](#)

ADDITIONAL EQUIPMENT \$420
SIDE WALL PANELING FULL HARDBOARD

ADDITIONAL EQUIPMENT \$46
ELECTRICALLY FOLDING EXTERIOR MIRRORS

ADDITIONAL EQUIPMENT \$115
2 ADDITIONAL MASTER KEYS

ADDITIONAL EQUIPMENT \$273
CARGO PARTITION

ADDITIONAL EQUIPMENT \$426
BLIND SPOT ASSIST

ADDITIONAL EQUIPMENT \$273
HEATED & ELECTRICALLY ADJUSTABLE EXTERIOR MIRRORS

ADDITIONAL EQUIPMENT
CRUISE CONTROL

[Payment Calculator](#)



Print



Check Availability



Share Vehicle

ADDITIONAL EQUIPMENT \$30
LEFT REAR DOOR ASSIST HANDLE



ADDITIONAL EQUIPMENT \$30
RIGHT REAR DOOR ASSIST HANDLES

ADDITIONAL EQUIPMENT \$885
DRIVER SIDE SLIDING DOOR

Basic Info

Body:	CARGO VAN
Exterior:	Arctic White
Interior:	Fabric Black
Engine:	3.0L V6 Cylinder
Trans:	7-Speed Automatic
TIRES:	
TIRES: LT215/85R16 AS	

Description

BLIND SPOT ASSIST

[Chat with us](#)

integrated USB-C Port, Bluetooth)

Other Vehicles You May Like

Thorax-Pelvis Side Airbags (Driver and Passenger)



(https://www.mercedesbenzoffairfield.com/inventory/new-



(https://www.mercedesbenzoffairfield.com/inventory/new-

Vehicle Details

-  Interior ▼
-  Exterior ▼
-  Entertainment ▼
-  Mechanical ▼
-  Safety ▼
-  Premium Options ▼
-  Details ▼



Chat with us

Production Dusseldorf
Wood Floor, Delete
Side Wall Panel - Full Hardboard
Assist Handle - Right Rear Door
Assist Handle-Left Rear Door
Assist Handle w/Partition
Sliding Door- Left Side
Tire Brand - Unspecified
Cruise Control

Attention Assist
Blind Spot Monitoring
Exterior Mirror - Power/Heated
Electrically Folding Exterior Mirrors
Keys - Two Additional Masters
12V Power Outlet- Driver Seat Base
Parametric Special Module (PSM) Preparation
Cargo Partition



Description



Packages



Disclaimer:

New vehicle pricing includes all offers. Tax, Title and Tags not included in vehicle prices shown and must be paid by the purchaser. While great effort is made to ensure the accuracy of the information on this site, errors do occur so please verify information with a customer service rep. This is easily done by calling us at (877) 557-5298 or by visiting us at the dealership.

**With approved credit. Terms may vary. Monthly payments are only estimates derived from the vehicle price with a 72 month term, 4.9% interest and 20% downpayment.

*Number of views in last 30 days

† Based on 2019 EPA mileage ratings. Use for comparison purposes only. Your actual mileage will vary depending on how you drive and maintain your vehicle.



[Chat with us](#)


Why Mercedes-Benz of Fairfield

Thank you for choosing Mercedes-Benz of Fairfield, where our highly trained staff is excited about the opportunity to earn your business. At our dealership, located near Westport, Weston, Wilton, Norwalk, and Bridgeport, you'll always find a comprehensive lineup of **new Mercedes-Benz vehicles (/new-vehicles/)** in stock, including a variety of GLA model as well as popular C-Class, E-Class, S-Class options. We've also selected a variety of high quality pre-owned luxury cars and **certified pre-owned models (/used-vehicles/certified-pre-owned-vehicles/)**.

Connect With Us

 (<https://www.facebook.com/MercedesBenzofFairfield>)  (<https://twitter.com/MBFairfield>)

 (<https://www.instagram.com/mercedesbenzoffairfield/>)  (<http://www.youtube.com/user/mbenzsmartfairfield>)

 (<https://maps.google.com/?q=165%20Commerce%20Dr.%20%2C%20Fairfield%2C%20Fair%2C%20CT%2006825>)

 (<https://www.yelp.com/biz/mercedes-benz-of-fairfield-fairfield-2>)

PENSKE

Mercedes-Benz of Fairfield

(<https://www.mercedesbenzoffairfield.com>)

[PRIVACY POLICY \(HTTPS://WWW.MERCEDESBNZOFFAIRFIELD.COM/PRIVACY-POLICY/\)](https://www.mercedesbenzoffairfield.com/privacy-policy/)

[CONTACT US \(HTTPS://WWW.MERCEDESBNZOFFAIRFIELD.COM/CONTACT-US/\)](https://www.mercedesbenzoffairfield.com/contact-us/)

[SITEMAP \(/SITEMAP/\)](/sitemap/)

Copyright © 2019 Mercedes-Benz of Fairfield

Advanced Automotive Dealer Websites by **Dealer Inspire** (<https://www.dealerinspire.com>)

Chat with us