



4500 Stevens Creek Blvd., San Jose, CA 95129

CONTACT US : (408) 641-4610

Select Language ▼

CHAT NOW

2019 Mercedes-Benz Sprinter 2500 Van Crew Van

Call Now: (408) 641-4610

Back To Inventory

Photos Stock Photos



AutoNation

HIGHLIGHTED FEATURES

- Emergency communication system
- Wireless phone connectivity
- Exterior parking camera rear
- Remote keyless entry
- Fully automatic headlights
- Trailer hitch receiver

3.0L V-6 Cyl
A/T
REAR-WHEEL DRIVE

Exterior Color : Arctic White
Interior Color : BLACK/WHITE

Stock # : KP058933
VIN : WD4PF0CD4KP058933

Price

\$49,494_{MSRP}

We'll Buy Your Car (<https://www.autonation.com>)

Calculate My Payment (<https://www.autonation.com>)

Get Pre-Qualified (<https://www.autonation.com>)

Reserve Now (<https://www.autonation.com/s>)

Make an Inquiry

- Is this still available?
- Call me ASAP
- Email me a coupon
- General questions

First Name *

Last Name *

Preferred Contact *

Email *

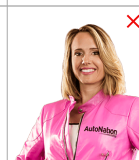
Phone

Our experts are online and ready to assist!

Comments

Chat

Text



Send Wish List

PACKAGES

Chrome Grille Package

- Vehicle Color Radiator Grille Frame
- Chrome Plated Radiator Grille

INCLUDED OPTIONS

Left Rear Door Assist Handle	Caluma Fabric Upholstery	Axle Ratio: 3.923	Right Rear Door Assist Handles
------------------------------	--------------------------	-------------------	--------------------------------

[View all packages and options](#)

3rd Row Seat, BLACK/WHITE; CALUMA FABRIC UPHOLSTERY, PARAMETRIC SPECIAL MODULE (PSM), CHROME GRILLE PACKAGE, 5000 LBS TRAILER HITCH, HALF-SIDED STEP REAR FOR TRAILER HITCH, Bluetooth Connection, LEFT REAR DOOR ASSIST HANDLE, RIGHT REAR DOOR ASSIST HANDLES, 3.923 AXLE RATIO



CHECK FOR OPEN SAFETY RECALLS
Visit NHTSA Website

(<https://vinrcl.safercar.gov/vin/?vin=WD4PF0CD4KP058933>)

4500 Stevens Creek Blvd.
San Jose CA 95129
Call **(408) 641-4610**

Detailed Specifications

Convenience Features

Residual heat recirculation	1-touch down Air conditioning	Tilt steering wheel Power windows	Passenger door bin	Front beverage holders	Overhead console Remote keyless	Illuminated entry	Driver door bin	entry Emergency communication system
-----------------------------	-------------------------------	-----------------------------------	--------------------	------------------------	---------------------------------	-------------------	-----------------	--------------------------------------

Entertainment Features

Primary LCD size: 5.8"	Wireless phone	AM/FM radio	connectivity: Bluetooth	monitors: 1
		1st row LCD	Speakers: 5	

Seats and Trim

Max seating	Front seats:	Passenger seat	capacity: 2	bucket	mounted armrest	Driver seat mounted armrest
--------------------	---------------------	----------------	--------------------	--------	-----------------	-----------------------------

Warranty

Basic warranty: 36 months/36,000miles	Roadside assistance coverage:	Powertrain warranty: 36 months/36,000miles	36 months/36,000miles	Corrosion perforation warranty:	60 months/100,000miles
--	--------------------------------------	---	-----------------------	--	------------------------

Specs and Dimensions

Wheelbase: 3,658mm (144.0")	Towing capacity: 2,268kg (5,000lbs)	Compression ratio: 18.00 to 1	Engine bore x stroke:	Engine horsepower:	Engine displacement:	Engine torque:	83.0mm x 92.0mm (3.27" x 3.62")	188hp @ 3,800RPM	3.0 L	325 lb.-ft. @ 1,400RPM
							GVWR: 4,128kg (9,100lbs)			

Body Exterior

Bodyside moldings	Trailer hitch receiver	Rear cargo: split	swing-out
-------------------	------------------------	--------------------------	-----------

Powertrain

Cylinder configuration:	Horsepower: 188hp @	Engine location:	V-6	3,800RPM	front	Transmission: 7 speed	Recommended fuel: Diesel	Engine Text liters: 3.0
--------------------------------	----------------------------	-------------------------	-----	----------	-------	------------------------------	---------------------------------	--------------------------------

Our experts are online and ready to assist!

Send Wish Text

automatic	Torque: 325 lb.-ft.	Manual- shift auto	@	1,400RPM	Number of valves: 24	Drive type: rear- wheel	Fuel tank capacity: 24.5gal.	Compressor: intercooled turbo
-----------	-------------------------------	-----------------------	---	----------	---------------------------------	---------------------------------------	--	--

Safety and Security

Traction control	Brake assist	ABS brakes Electronic stability	Dual front side impact airbags	4 wheel disc brakes	Overhead airbag	Ignition disable	Dual front impact airbags
------------------	--------------	---------------------------------	--------------------------------	---------------------	-----------------	------------------	---------------------------

Suspension/Handling

Front tires:	Rear tires: 245/75QR16.0E	Wheel size: 16"	245/75QR16.0E Single rear wheels	Rear anti-roll bar	Front wheel independent suspension	Front anti-roll bar	Power steering
---------------------	-------------------------------------	------------------------	----------------------------------	--------------------	------------------------------------	---------------------	----------------

Lighting, Visibility and Instrumentation

Outside temperature display	Exterior parking	Fully automatic headlights	camera rear	Tachometer	Display: analog	Low tire pressure warning
-----------------------------	------------------	----------------------------	-------------	------------	---------------------------	---------------------------

Similar Vehicles

		
<small>COMING SOON</small> AutoNation	<small>COMING SOON</small> AutoNation	
2019 Mercedes-Benz Sprinter 2500 High Roof V6 Van Crew Van MSRP \$47,881	2019 Mercedes-Benz Sprinter 2500 High Roof V6 Van Crew Van MSRP \$50,616	2019 Mercedes-Benz Sprinter 2500 High Roof V6 Van Crew Van MSRP \$50,104

Accessories and color may vary. Quoted price subject to change without notice to correct errors or omissions. New vehicle pricing may already include applicable manufacturer special offers which may expire at any time. Manufacturer special offer data and vehicle features is provided by third parties and believed to be accurate as of the time of publication. Please contact the store by email or phone for details and availability of special offers. Sales tax or other taxes, tags, registration fees, government fees, smog certificate of compliance or noncompliance, emission testing charge, electronic filing fee, and \$85 dealer document preparation charges is not included in quoted price.

Certain data and other content displayed herein is copyrighted by AutoNation, Inc. and / or third parties. (In addition, providers of data and other materials to AutoNation, Inc. or such third parties may have a copyright interest in and to such data to the extent that such data and other materials are subject to copyright protection under applicable United States laws.) Such data may not be reproduced or distributed in whole or in part by any printed, electronic or other means without explicit written permission from AutoNation, Inc. All information is gathered from sources that are believed to be reliable, but no assurance can be given that this information is complete and neither AutoNation, Inc. nor its suppliers assume any responsibility for errors or omissions or warrant the accuracy of this information.

Displayed MPG is based on applicable EPA mileage ratings. Use for comparison purposes only. Your actual mileage will vary, depending on how you drive and maintain your vehicle, driving conditions, battery pack age/condition (hybrid models only) and other factors.

Send Us a Text

Our experts are online and ready to assist!

Chat **Text**

