



4500 Stevens Creek Blvd., San Jose, CA 95129

CONTACT US : (408) 641-4610

Select Language ▼

CHAT NOW

# 2019 Mercedes-Benz Sprinter 2500 High Roof V6 Van Crew Van

Call Now: (408) 641-4610

Back To Inventory

Photos Stock Photos



Send Wish List

## Price

**\$50,104**<sub>MSRP</sub>

We'll Buy Your Car (<https://www.autonation.com>)

Calculate My Payment (<https://www.autonation.com>)

Get Pre-Qualified (<https://www.autonation.com>)

Reserve Now (<https://www.autonation.com/s>)

## Make an Inquiry

- Is this still available?
- Call me ASAP
- Email me a coupon
- General questions

First Name \*

Last Name \*

Preferred Contact \*

Email \*

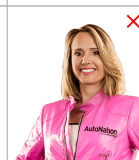
Phone

Our experts are online and ready to assist!

Comments

Chat

Text



### HIGHLIGHTED FEATURES

Blind spot sensor	Lane departure	Emergency communication system	Wireless phone connectivity
Parking sensors	Exterior parking camera rear	Rain sensing wipers	Remote keyless entry



**3.0L V-6 Cyl**  
**7-SPEED A/T**  
**REAR-WHEEL DRIVE**

Stock # : **KP078413**  
VIN : **WD4PF0CD1KP078413**

### PACKAGES

**Premium Plus Package**

- Leather Steering Wheel
- Active Distance Assist DISTRONIC
- Free Map Data Updates for 3 Years
- Tray For Smartphones
- Intelligent Navigation
- Sirius XM Satellite Radio
- Radio: MBUX Multimedia System w/10.25" Touchscreen
- Traffic Sign Assist

[View all packages and options](#)

PREMIUM PLUS PACKAGE,PREMIUM PACKAGE,PARKING PACKAGE,MULTIFUNCTION STEERING WHEEL,HINGED LID FOR STORAGE COMPARTMENT,Bluetooth Connection



**CHECK FOR OPEN SAFETY RECALLS**  
Visit NHTSA Website

(<https://vinrcl.safercar.gov/vin/?vin=WD4PF0CD1KP078413>)

4500 Stevens Creek Blvd.  
San Jose CA 95129  
Call **(408) 641-4610**

**THIS VEHICLE IS IN TRANSIT**

Detailed Specifications

Convenience Features

1-touch down	Tilt steering wheel	Air conditioning	Residual heat recirculation	Rear beverage holders	Power windows	Remote keyless entry	Overhead console	Driver door bin
Front beverage holders	Speed control	Illuminated entry			Passenger door bin		Emergency communication system	

Entertainment Features

<b>Primary LCD size:</b> 7.0"	<b>Wireless phone</b>	AM/FM radio	<b>Speakers:</b> 5	<b>connectivity:</b> Bluetooth	<b>monitors:</b> 1		mounted audio controls
		<b>1st row LCD</b>		Steering wheel			

Seats and Trim

<b>Max seating</b>	<b>Rear seats:</b>	<b>Front seats:</b>	<b>capacity:</b> 5	bench Passenger seat	bucket Driver seat mounted	mounted armrest	armrest
--------------------	--------------------	---------------------	--------------------	----------------------	----------------------------	-----------------	---------

Warranty

<b>Basic warranty:</b> 36 months/36,000miles	<b>Roadside assistance coverage:</b>	<b>Powertrain warranty:</b> 36 months/36,000miles	36 months/36,000miles	<b>Corrosion perforation warranty:</b>	60 months/100,000miles
--	--------------------------------------	---	-----------------------	--	------------------------

Specs and Dimensions

<b>Wheelbase:</b> 3,658mm (144.0")	<b>Compression ratio:</b> 18.00 to 1	<b>Engine bore x stroke:</b> 83.0mm x 92.0mm	<b>Engine horsepower:</b>	<b>Engine displacement:</b> 3.0 L	<b>Engine torque:</b> 325 lb.-ft.	(3.27" x 3.62")	188hp @ 3,800RPM	@ 1,400RPM
							<b>GVWR:</b> 4,128kg (9,100lbs)	

Body Exterior

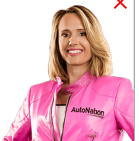
Body side moldings	<b>Rear cargo:</b> split	Power door mirrors	swing-out	Heated door
--------------------	--------------------------	--------------------	-----------	-------------

Powertrain

Send Wish Desk

Our experts are online and ready to assist!

**Chat** **Text**



<b>Cylinder configuration:</b> V-6	<b>Horsepower:</b> 188hp @ 3,800RPM	<b>Engine location:</b> front	automatic	<b>Torque:</b> 325 lb.-ft. @ 1,400RPM	Manual-shift auto <b>Number of valves:</b> 24	<b>Drive type:</b> rear-wheel	<b>Fuel tank capacity:</b> 24.5gal.	<b>Compressor:</b> intercooled turbo
<b>Transmission:</b> 7 speed	<b>Recommended fuel:</b> Diesel	<b>Engine liters:</b> 3.0						

Safety and Security

Traction control	Brake assist	ABS brakes Electronic stability	Dual front side impact airbags	4 wheel disc brakes	Overhead airbag	Ignition disable	Dual front impact airbags
------------------	--------------	---------------------------------	--------------------------------	---------------------	-----------------	------------------	---------------------------

Suspension/Handling

<b>Front tires:</b>	<b>Rear tires:</b> 245/75QR16.0E	<b>Wheel size:</b> 16"	245/75QR16.0E Single rear wheels	Rear anti-roll bar	Front wheel independent suspension	Front anti-roll bar	Power steering
---------------------	----------------------------------	------------------------	----------------------------------	--------------------	------------------------------------	---------------------	----------------

Lighting, Visibility and Instrumentation

Outside temperature display	Exterior parking camera rear	Fully automatic headlights Tachometer	wipers	Active Lane Keeping Assist active	Variably intermittent wipers <b>Parking sensors:</b> automated	Rear window defroster	Low tire pressure warning	<b>Blind spot sensor:</b> Blind Spot Assist warning
Rain sensing	<b>Lane departure:</b>	<b>Display:</b> analog						

Similar Vehicles



2019 Mercedes-Benz Sprinter 2500 High Roof V6 Van Crew Van  
MSRP \$47,881



2019 Mercedes-Benz Sprinter 2500 High Roof V6 Van Crew Van  
MSRP \$50,616

Accessories and color may vary. Quoted price subject to change without notice to correct errors or omissions. New vehicle pricing may already include applicable manufacturer special offers which may expire at any time. Manufacturer special offer data and vehicle features is provided by third parties and believed to be accurate as of the time of publication. Please contact the store by email or phone for details and availability of special offers. Sales tax or other taxes, tags, registration fees, government fees, smog certificate of compliance or noncompliance, emission testing charge, electronic filing fee, and \$85 dealer document preparation charges is not included in quoted price.

Certain data and other content displayed herein is copyrighted by AutoNation, Inc. and / or third parties. (In addition, providers of data and other materials to AutoNation, Inc. or such third parties may have a copyright interest in and to such data to the extent that such data and other materials are subject to copyright protection under applicable United States laws.) Such data may not be reproduced or distributed in whole or in part by any printed, electronic or other means without explicit written permission from AutoNation, Inc. All information is gathered from sources that are believed to be reliable, but no assurance can be given that this information is complete and neither AutoNation, Inc. nor its suppliers assume any responsibility for errors or omissions or warrant the accuracy of this information.

Displayed MPG is based on applicable EPA mileage ratings. Use for comparison purposes only. Your actual mileage will vary, depending on how you drive and maintain your vehicle, driving conditions, battery pack age/condition (hybrid models only) and other factors.

Send Wish List

Our experts are online and ready to assist!

**Chat**   **Text**