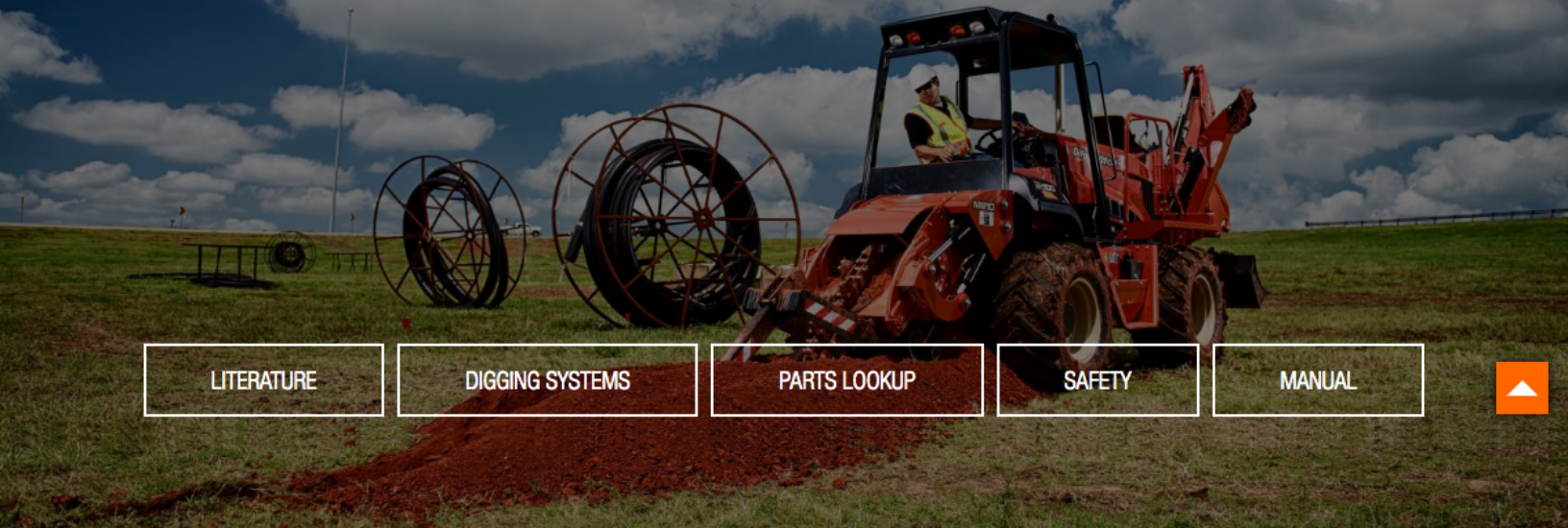




# RT100 RIDE-ON TRENCHER

It Won't Stop Working Until You Do.



LITERATURE

DIGGING SYSTEMS

PARTS LOOKUP

SAFETY

MANUAL



LITERATURE

DIGGING SYSTEMS

PARTS LOOKUP

SAFETY

MANUAL

REQUEST A QUOTE

The RT100 ride-on trencher scores a perfect 100 in reliability, efficiency and productivity. Its 100-hp (74.6-kW) Deutz® diesel engine not only provides the power you need to get the job done, but it's also Tier 4i, so you can rely on it for years to come without need for an upgrade. From top to bottom, the RT100 is solid, engineered with heavy-duty components that can handle those long hours on the jobsite, plus an operator's station that keeps you going strong, too.



WATCH VIDEO

PHOTO GALLERY

RT100

# SUPERIOR SUPPORT

- Your Ditch Witch equipment is backed by a worldwide network of dealers you can count on for unmatched commitment to your success. From genuine Ditch Witch parts to factory-trained service to expert advice, your Ditch Witch dealer has it all for you.

## ATTACHMENTS



M912 TRENCHER



M910 TRENCHER



A920 BACKHOE

## SPECIFICATIONS

### DIMENSIONS

### POWER (TIER 3)

POWER (TIER 3)	U.S.	METRIC
Engine	Deutz® TCD3.6L4	
Fuel	Diesel	
Cooling medium	Liquid	
Injection	Direct	
Aspiration	Turbocharged, charge air cooled	
Number of cylinders	4	
Displacement	220 in <sup>3</sup>	3.6 L
Bore	3.86 in	98 mm
Stroke	4.72 in	120 mm
Engine manufacturer's gross power rating (SAE J1349)	100 hp	74.5 kW
Rated speed	2,300 rpm	
Emissions compliance (LRC)	EPA Tier 3	EU Stage IIIA

### POWER (TIER 4i)

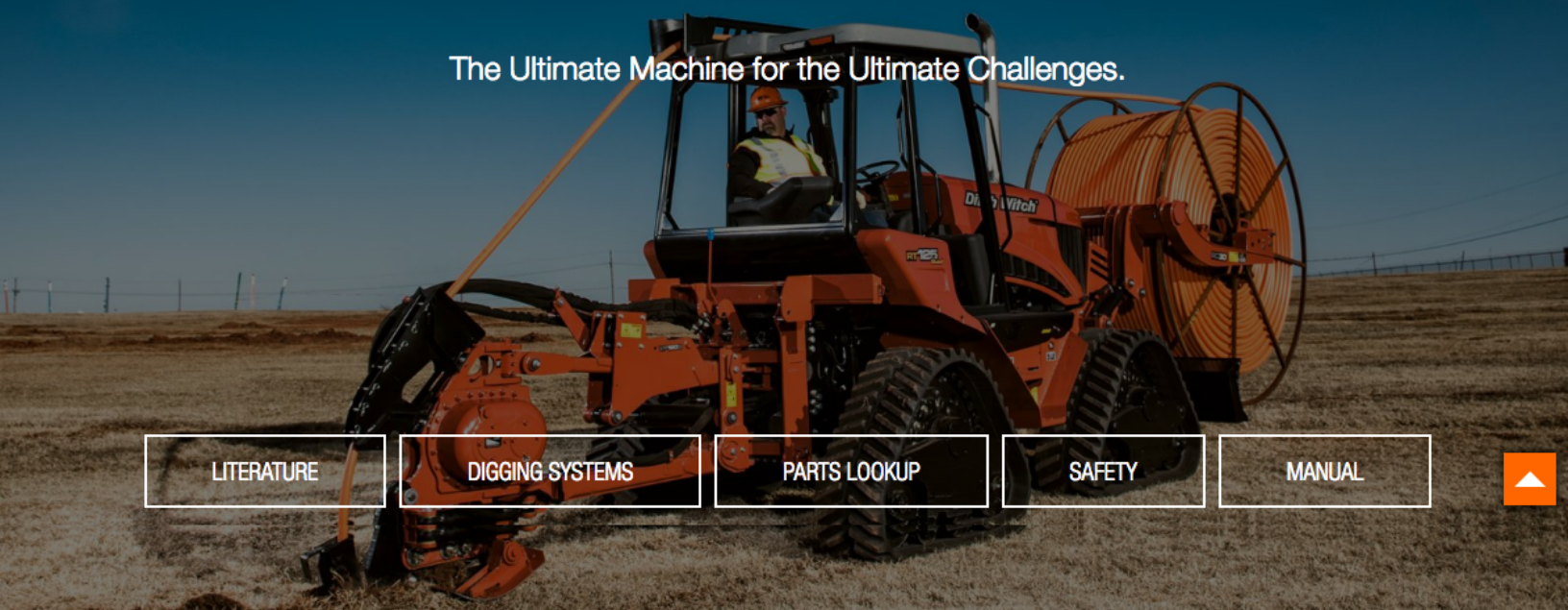
POWER (TIER 4i)	U.S.	METRIC
Engine	Deutz TCD3.6L4	
Cooling medium	Liquid	
Injection	Direct	
Aspiration	Turbocharged, charge air cooled	
Number of cylinders	4	
Displacement	220 in <sup>3</sup>	3.6 L
Bore	3.86 in	98 mm
Stroke	4.72 in	120 mm
Engine manufacturer's gross power rating (SAE J1349)	100 hp	74.5 kW
Rated speed	2,300 rpm	
Emissions compliance	EPA Tier 4i	EU Stage IIIB





# RT125 QUAD

The Ultimate Machine for the Ultimate Challenges.



LITERATURE

DIGGING SYSTEMS

PARTS LOOKUP

SAFETY

MANUAL



Nothing lets you tackle more types of terrain than the extraordinarily productive, powerful and stable RT125 Quad. Its massive undercarriage, superior Quad Track System and three-speed, shift-on-the-fly transmission combine to handle whatever the jobsite throws at you. Its newly redesigned operator's station, with comfort features including an ergonomic, swivel operator seat and controls console, and increased legroom, keeps you more productive. With the RT125 Quad, nothing slows you down.



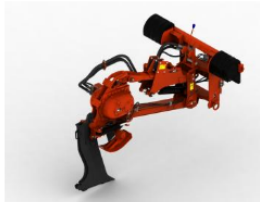
PHOTO GALLERY

RT125 QUAD

## SUPERIOR SUPPORT

- Your Ditch Witch equipment is backed by a worldwide network of dealers you can count on for unmatched commitment to your success. From genuine Ditch Witch parts to factory-trained service to expert advice, your Ditch Witch dealer has it all for you.

## ATTACHMENTS



VP120Q PLOW



ST120H TRENCHER



RS40 SAW



RC30 REEL CARRIER

## SPECIFICATIONS

DIMENSIONS



OPERATION



BACKFILL BLADE



POWER PLANT



### POWER PLANT

Engine	Deutz TCD3.6L4	
Fuel	Diesel	
Cooling Medium	Liquid	
Injection	Direct	
Aspiration	Turbocharged, Charge Air Cooled	
Number of cylinders	4	
Displacement	221 in <sup>3</sup>	3.6 L
Bore	3.86 in	98 mm
Stroke	4.72 in	120 mm
Manufacturer's gross power rating (SAE J1995)	121 hp	90 kW
Estimated net power rating (SAE J1349)	113 hp	84 kW
Rated speed	2300 rpm	2300 r/min
Maximum engine tilt angles (Longitudinal)	30°	30°
Maximum engine tilt angles (Lateral)	30°	30°
Emissions compliance (highly regulated countries)	EPA Tier 4 Final	EU Stage IV
Emissions compliance (less regulated countries)	EPA Tier 4i	EU Stage IIIB